

Land at Summerville Farm
STOCKTON ON TEES



House Type Pack

January 2022 | P21-0029_09D

Prepared by Pegasus Group on behalf of **Vistry Partnerships North East**



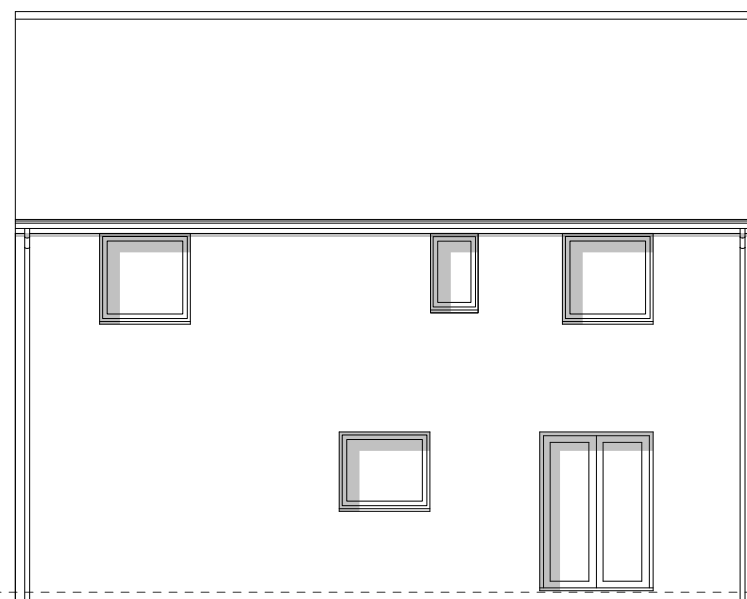
PLOTS: 9(H), 141, 142(H), 235, 236(H), 311(H), 312, 314(H)



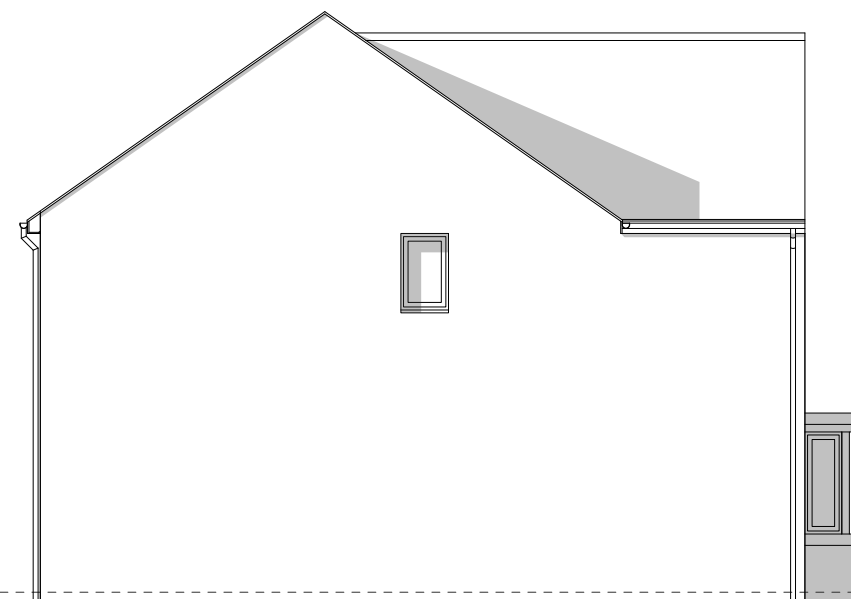
FRONT ELEVATION

SIDE ELEVATION

PLEASE REFER TO MATERIALS PLAN FOR DETAILED SPECIFICATION



REAR ELEVATION

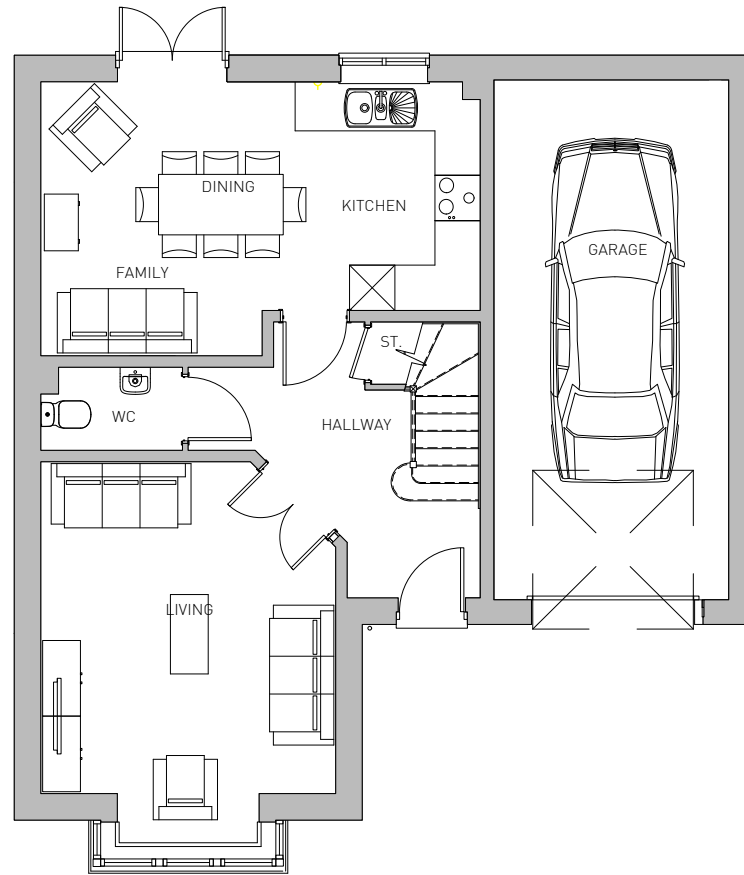


SIDE ELEVATION

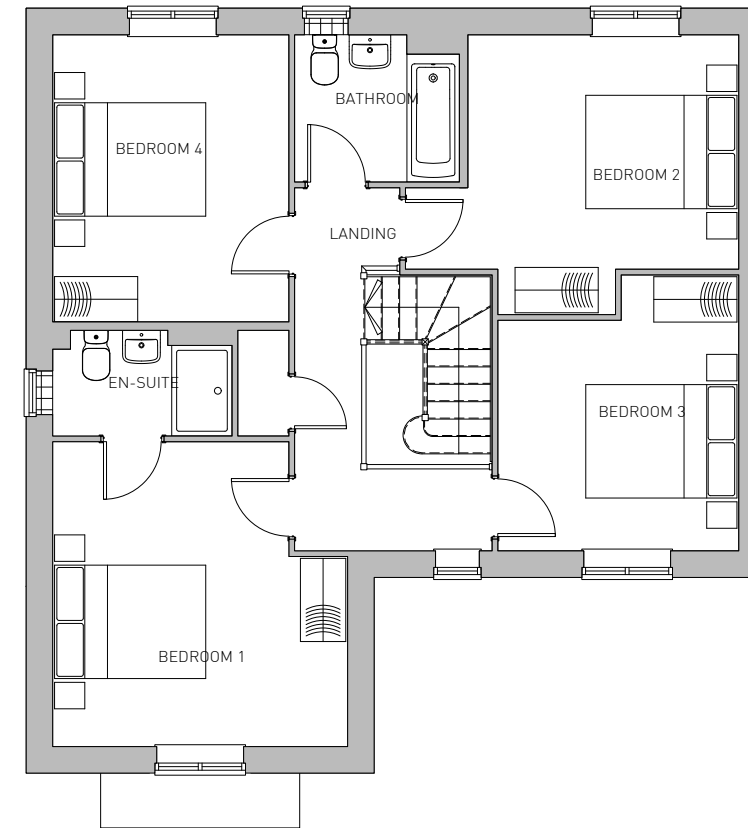


STOCKTON, SUMMERVILLE FARM - GRAINGER - 1329 SQFT. / 123.5 SQM.





GROUND FLOOR



FIRST FLOOR



STOCKTON, SUMMERVILLE FARM - GRAINGER - 1329 SQFT. / 123.5 SQM.

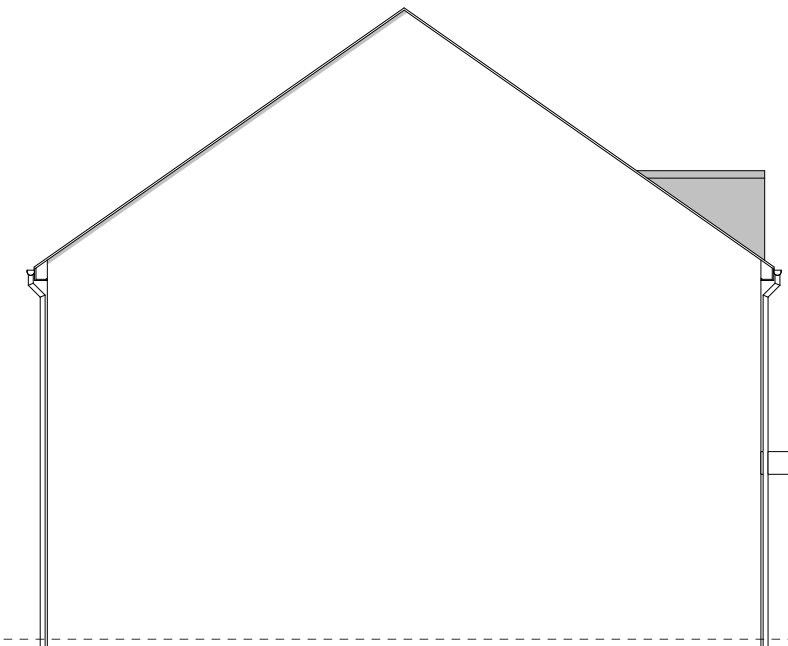
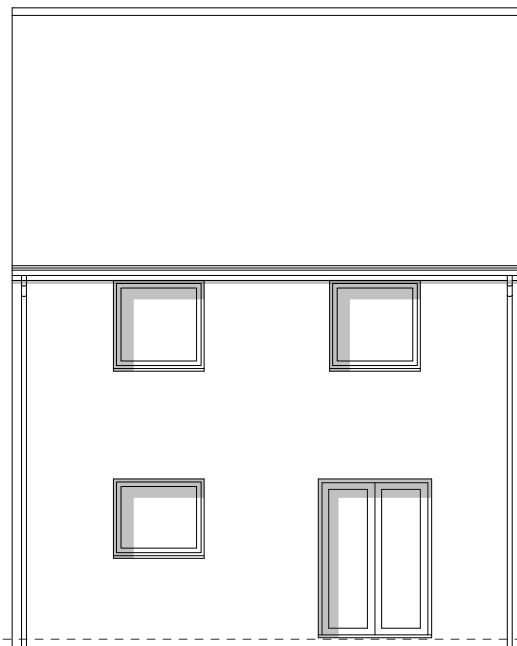
PLOTS: 6(H), 10(H), 12, 16(H), 23(H), 136, 144, 145, 167(H), 168, 183(H), 277(H), 302, 335(H), 337, 383(H), 384



FRONT ELEVATION

SIDE ELEVATION

PLEASE REFER TO MATERIALS PLAN FOR DETAILED SPECIFICATION



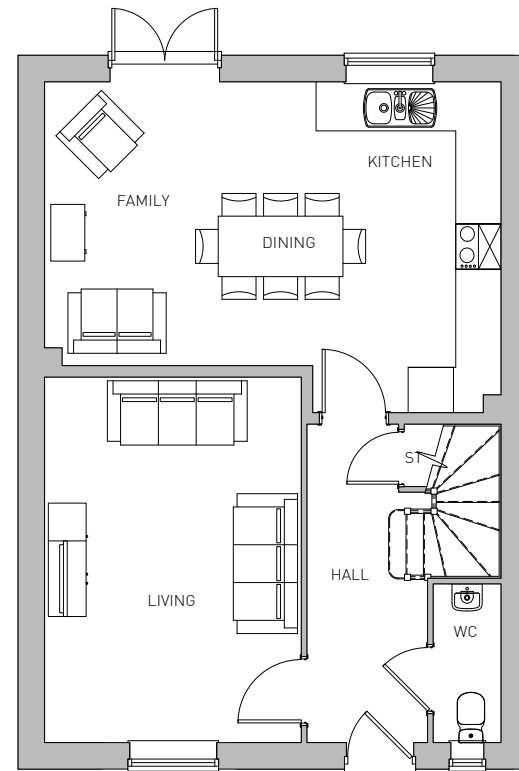
REAR ELEVATION

SIDE ELEVATION

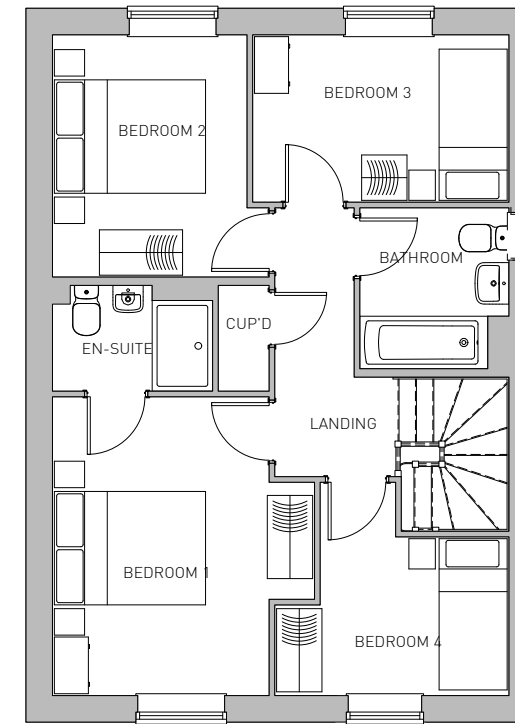


STOCKTON, SUMMERVILLE FARM - MYLNE - 1136 SQFT. / 105 SQM.





GROUND FLOOR



FIRST FLOOR

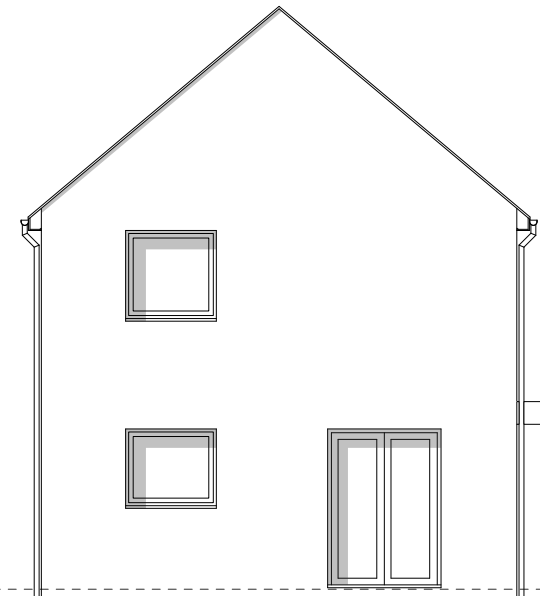
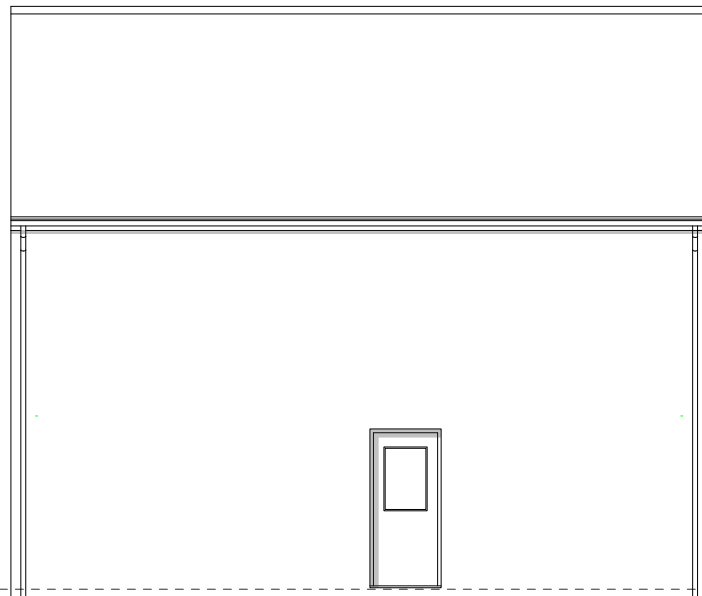


STOCKTON, SUMMERVILLE FARM - MYLNE - 1136 SQFT. / 105 SQM.

PLOTS: 15(H), 21, 182(H), 223(H), 313(H), 316, 363, 382(H)



PLEASE REFER TO MATERIALS PLAN FOR DETAILED SPECIFICATION



REAR ELEVATION

SIDE ELEVATION



STOCKTON, SUMMERVILLE FARM - BECKET V1 - 1024 SQFT. / 95.1 SQM.



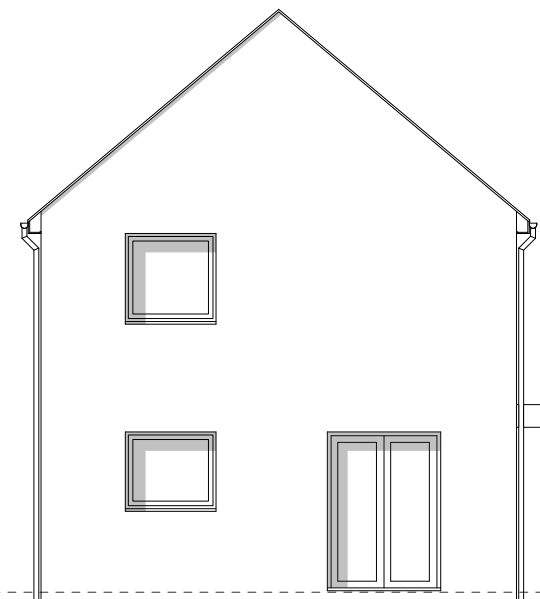
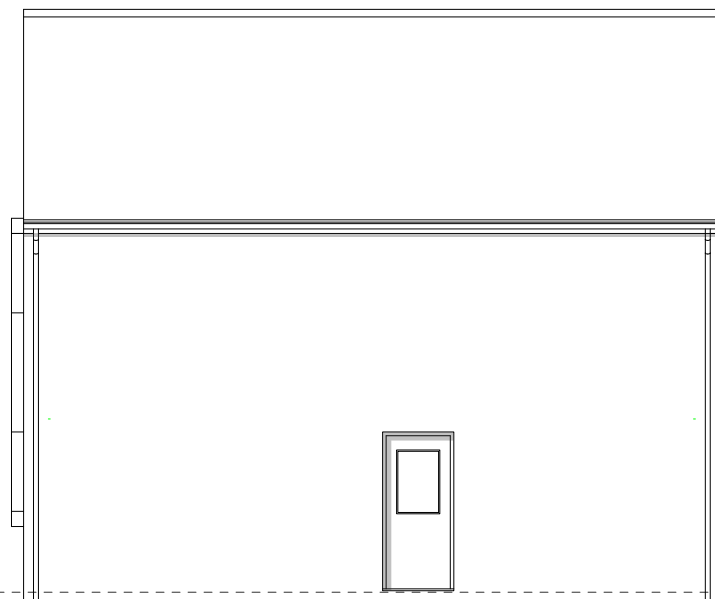
PLOTS: 137, 209(H), 339(H), 371(H)



FRONT ELEVATION

SIDE ELEVATION

PLEASE REFER TO MATERIALS PLAN FOR DETAILED SPECIFICATION



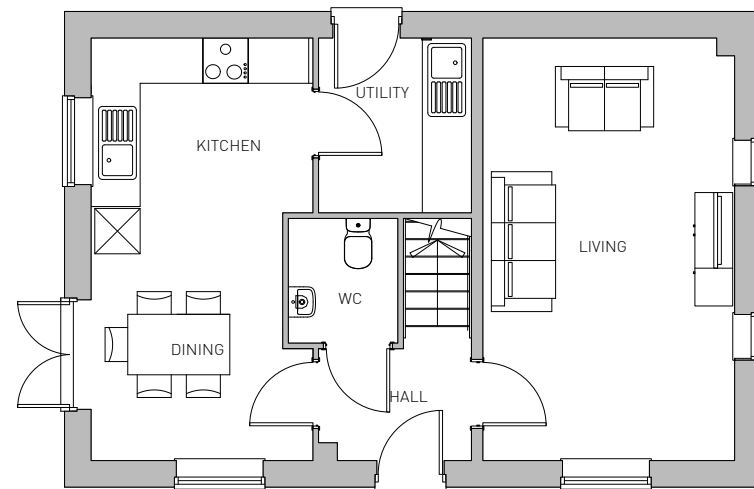
REAR ELEVATION

SIDE ELEVATION

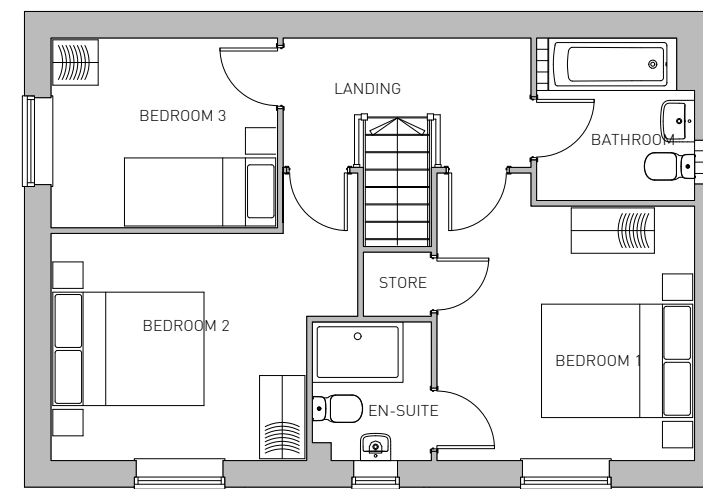


STOCKTON, SUMMERVILLE FARM - BECKET V2 - 1024 SQFT. / 95.1 SQM.





GROUND FLOOR



FIRST FLOOR



STOCKTON, SUMMERVILLE FARM - BECKET V1 & 2 - 1024 SQFT. / 95.1 SQM.

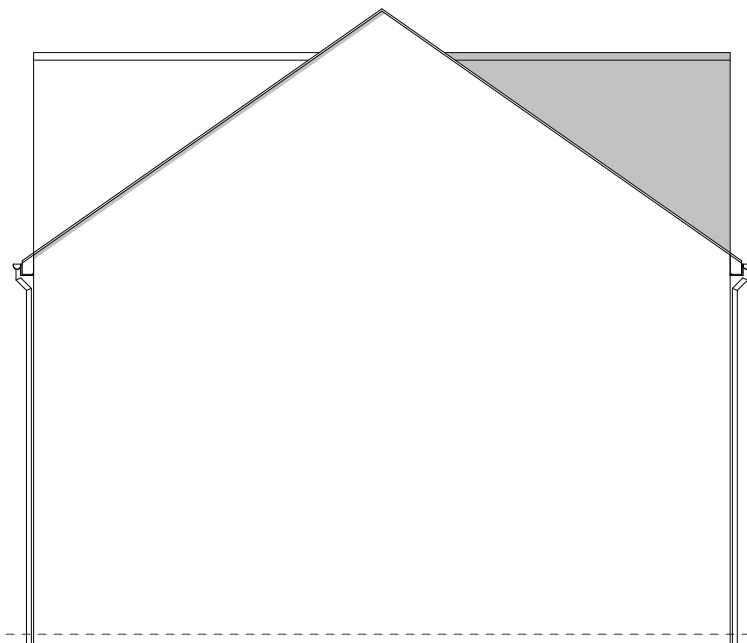
PLOTS: 8(H), 18(H), 37, 60, 101, 118(H), 123, 213(H), 224(H), 287



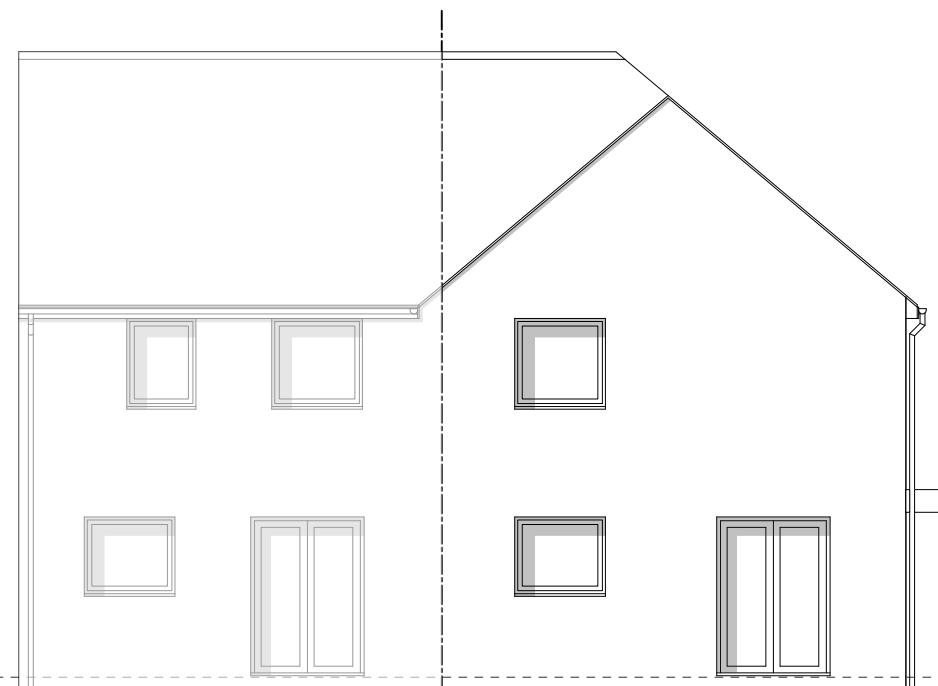
FRONT ELEVATION

SIDE ELEVATION

PLEASE REFER TO MATERIALS PLAN FOR DETAILED SPECIFICATION



REAR ELEVATION



SIDE ELEVATION



STOCKTON, SUMMERVILLE FARM - BECKET V3- 1024 SQFT. / 95.1 SQM.



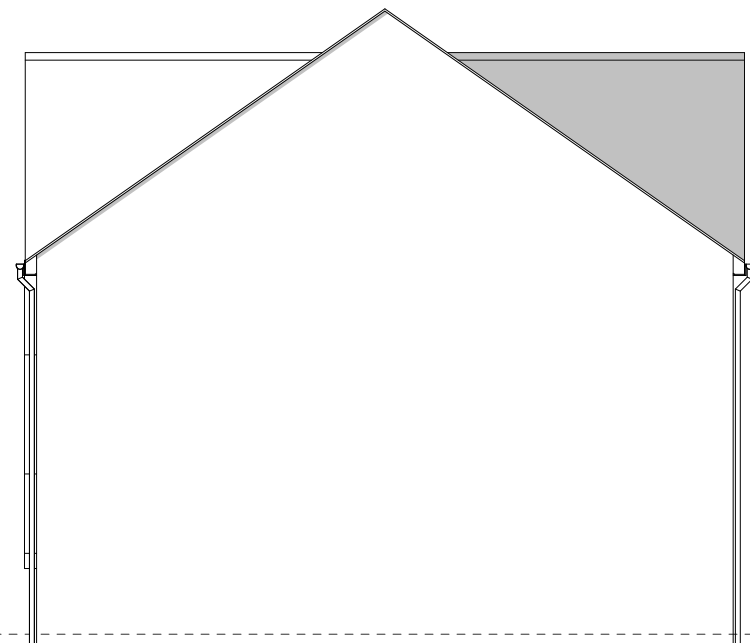
PLOTS: 59(H), 100(H), 128, 135(H), 196, 210, 221(h), 228, 233, 264, 275(H), 353(H)



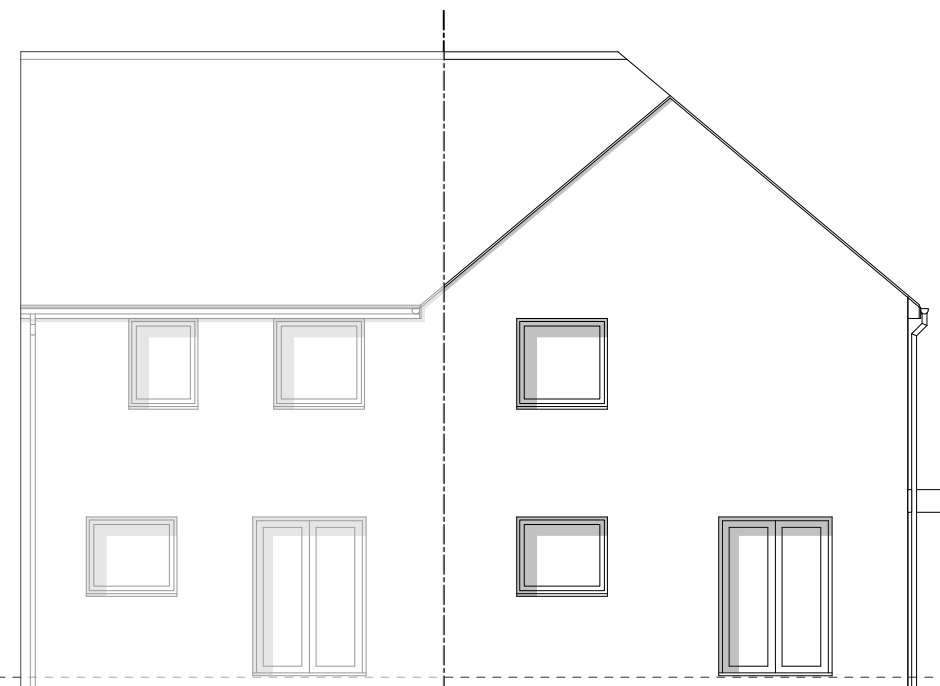
FRONT ELEVATION

SIDE ELEVATION

PLEASE REFER TO MATERIALS PLAN FOR DETAILED SPECIFICATION



REAR ELEVATION

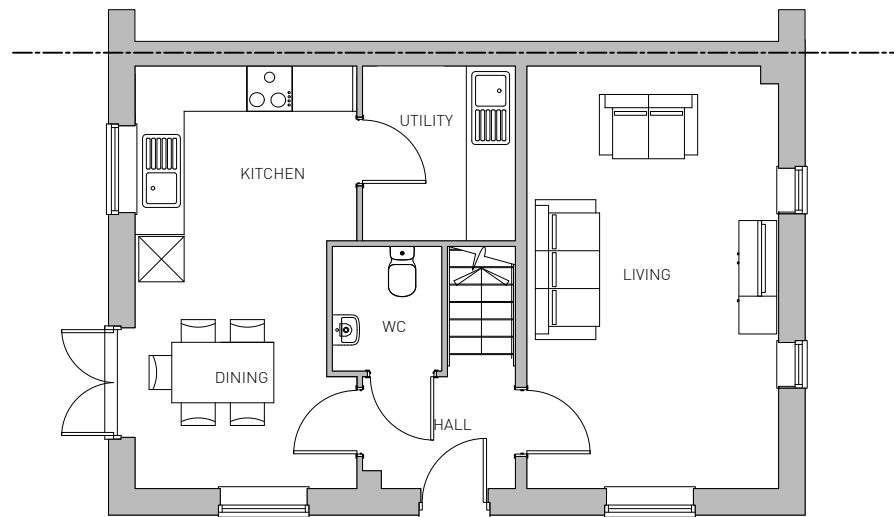


SIDE ELEVATION

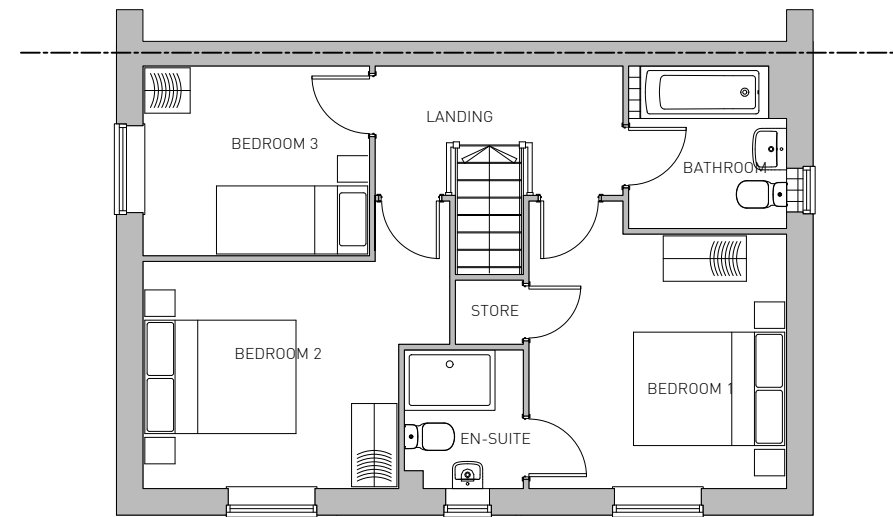


STOCKTON, SUMMERVILLE FARM - BECKET V4- 1024 SQFT. / 95.1 SQM.





GROUND FLOOR



FIRST FLOOR



STOCKTON, SUMMERVILLE FARM - BECKET V3 & 4- 1024 SQFT. / 95.1 SQM.

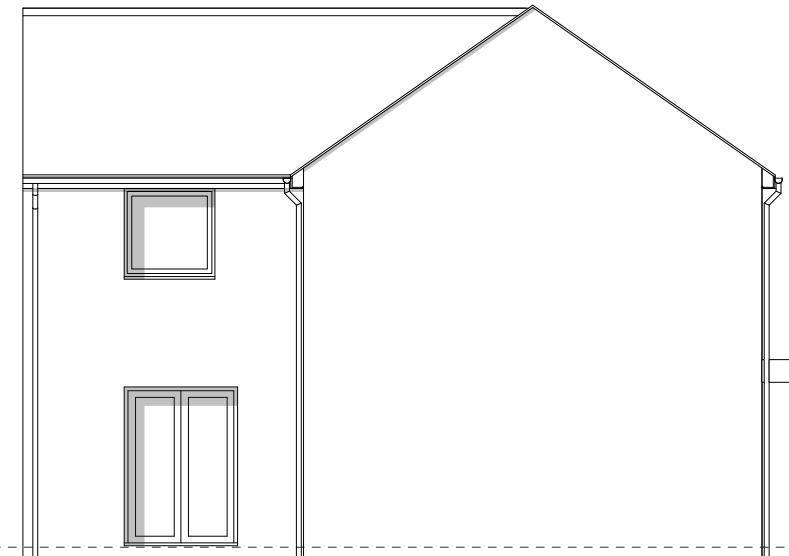
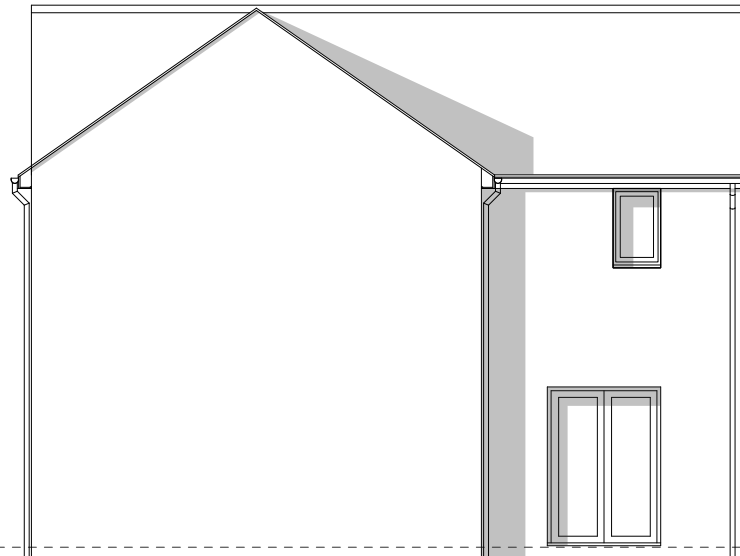
PLOTS: 36, 143, 147, 166(H), 178(H), 192, 278, 306(H), 308, 333(H)



FRONT ELEVATION

SIDE ELEVATION

PLEASE REFER TO MATERIALS PLAN FOR DETAILED SPECIFICATION



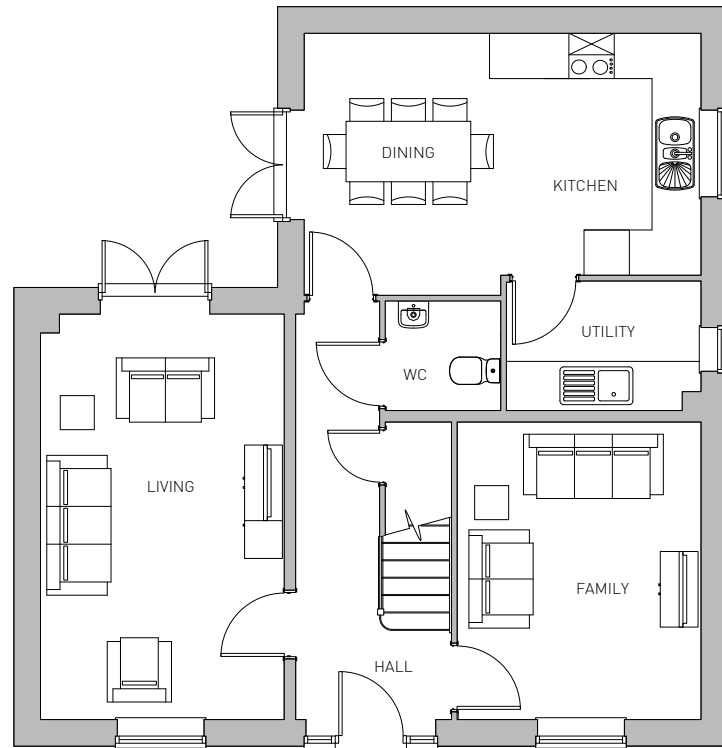
REAR ELEVATION

SIDE ELEVATION

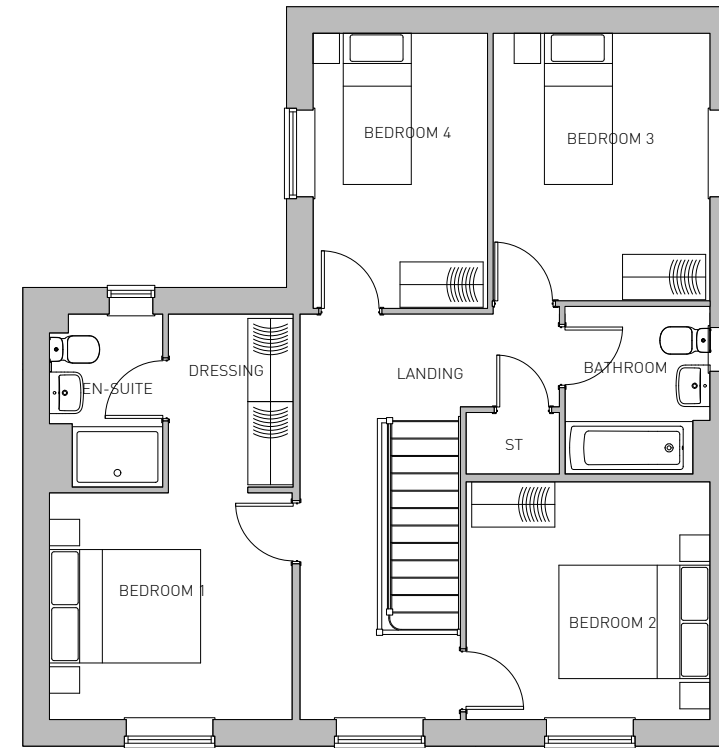


STOCKTON, SUMMERVILLE FARM - KNIGHTLY - 1429 SQFT. / 132.8 SQM.





GROUND FLOOR



FIRST FLOOR



STOCKTON, SUMMERVILLE FARM - KNIGHTLY - 1429 SQFT. / 132.8 SQM.

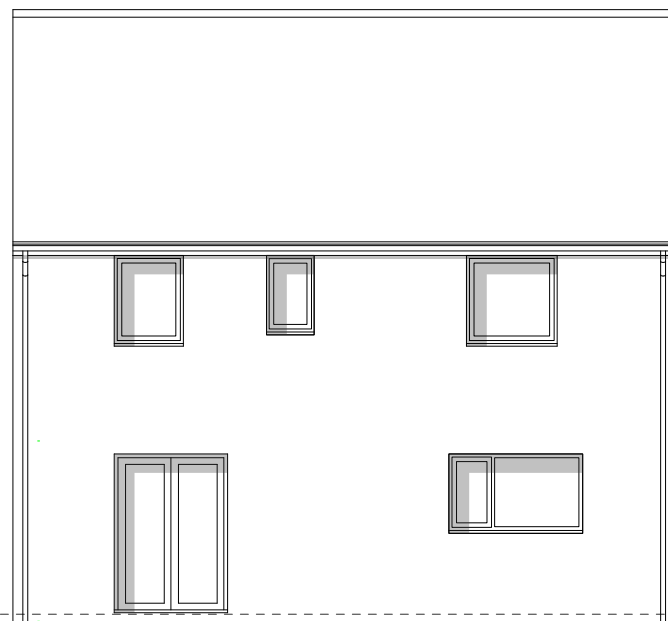
PLOTS: 1(H), 11(H), 22, 24, 140, 146(H), 181(H), 184, 193(H), 194(H), 276, 301(H), 303(H), 307(H), 309(H), 310, 334(H), 336(H), 338(H), 380(H), 381(H), 385(H)



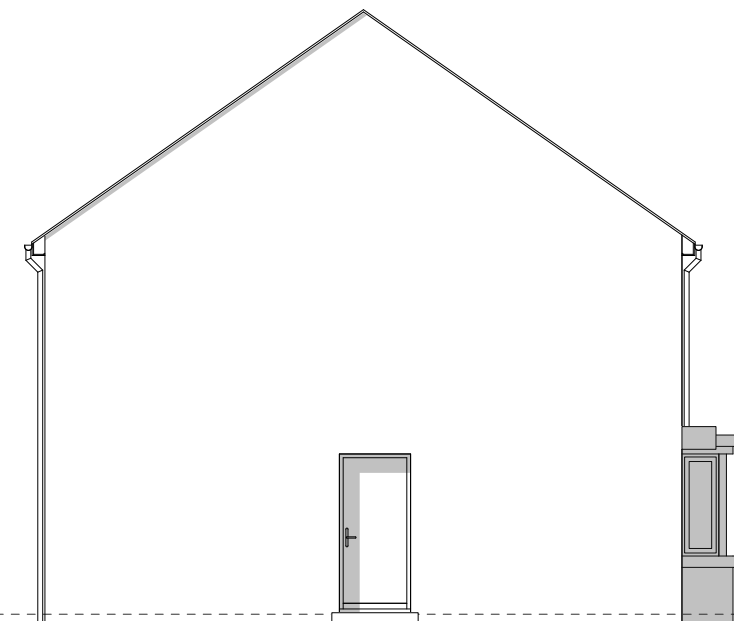
FRONT ELEVATION

SIDE ELEVATION

PLEASE REFER TO MATERIALS PLAN FOR DETAILED SPECIFICATION



REAR ELEVATION

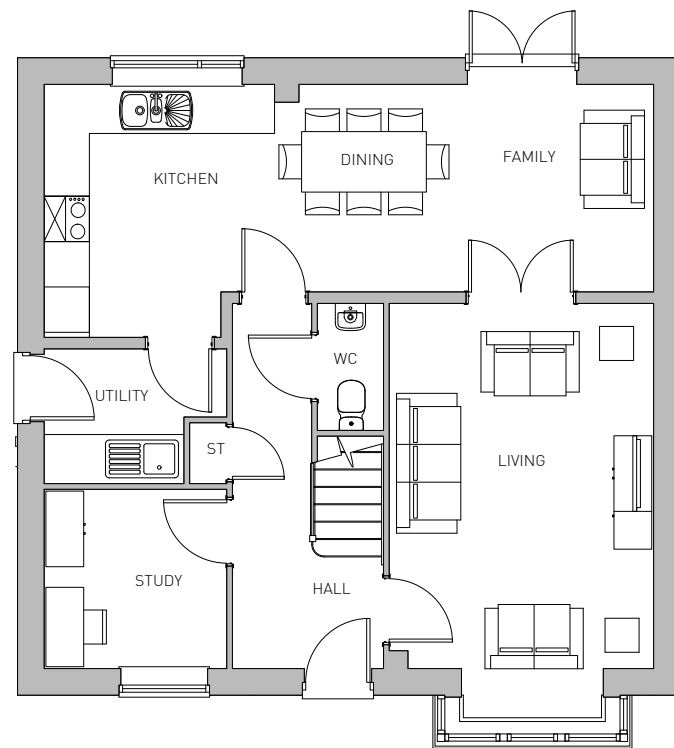


SIDE ELEVATION

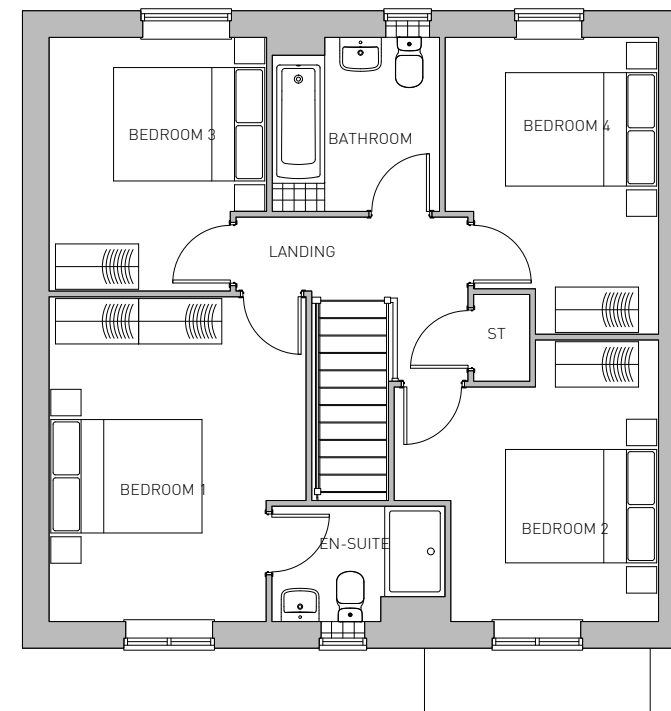


STOCKTON, SUMMERVILLE FARM - PEMBROKE - 1355 SQFT. / 125.9 SQM.





GROUND FLOOR



FIRST FLOOR

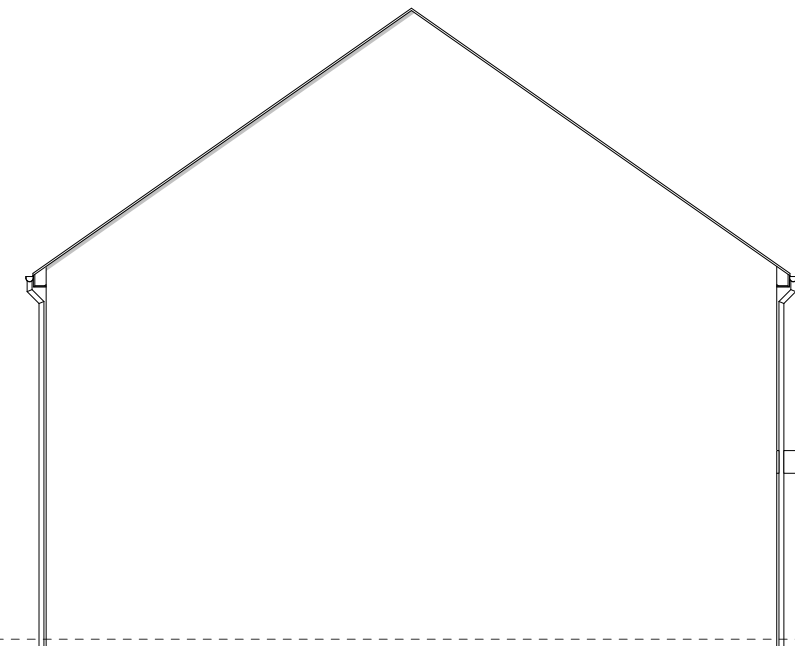


STOCKTON, SUMMERVILLE FARM - PEMBROKE - 1355 SQFT. / 125.9 SQM.

PLOTS: 266, 267(H), 342, 343(H)



PLEASE REFER TO MATERIALS PLAN FOR DETAILED SPECIFICATION



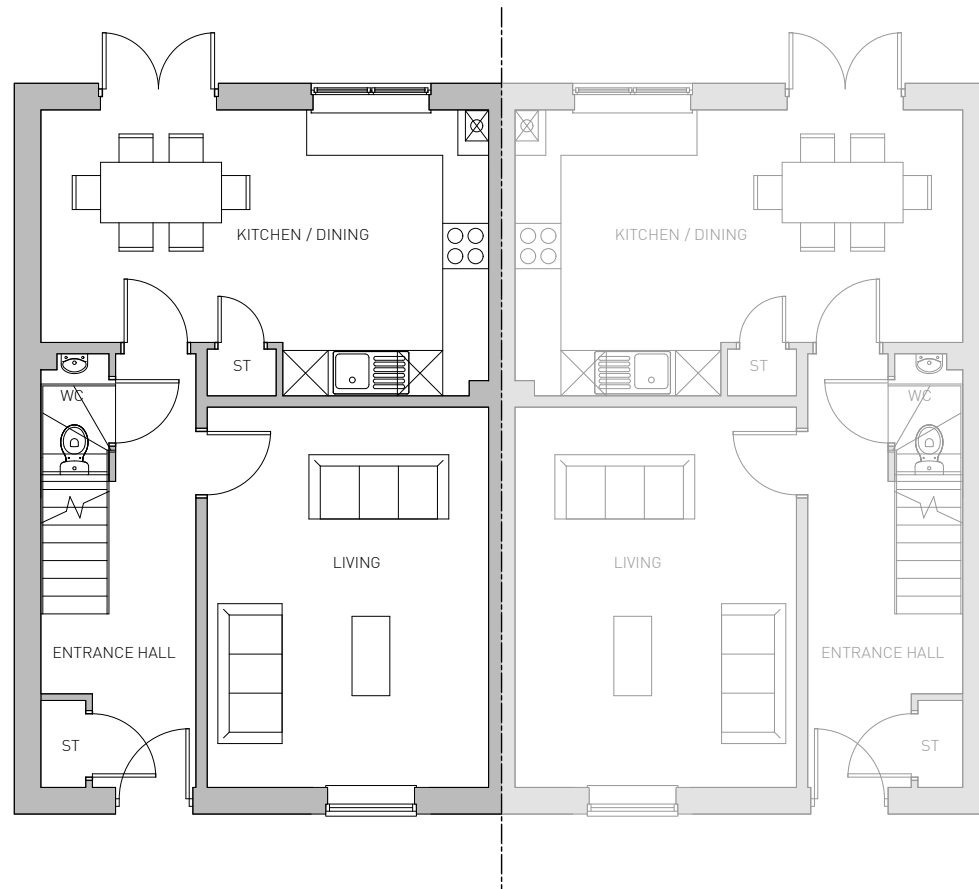
REAR ELEVATION

SIDE ELEVATION

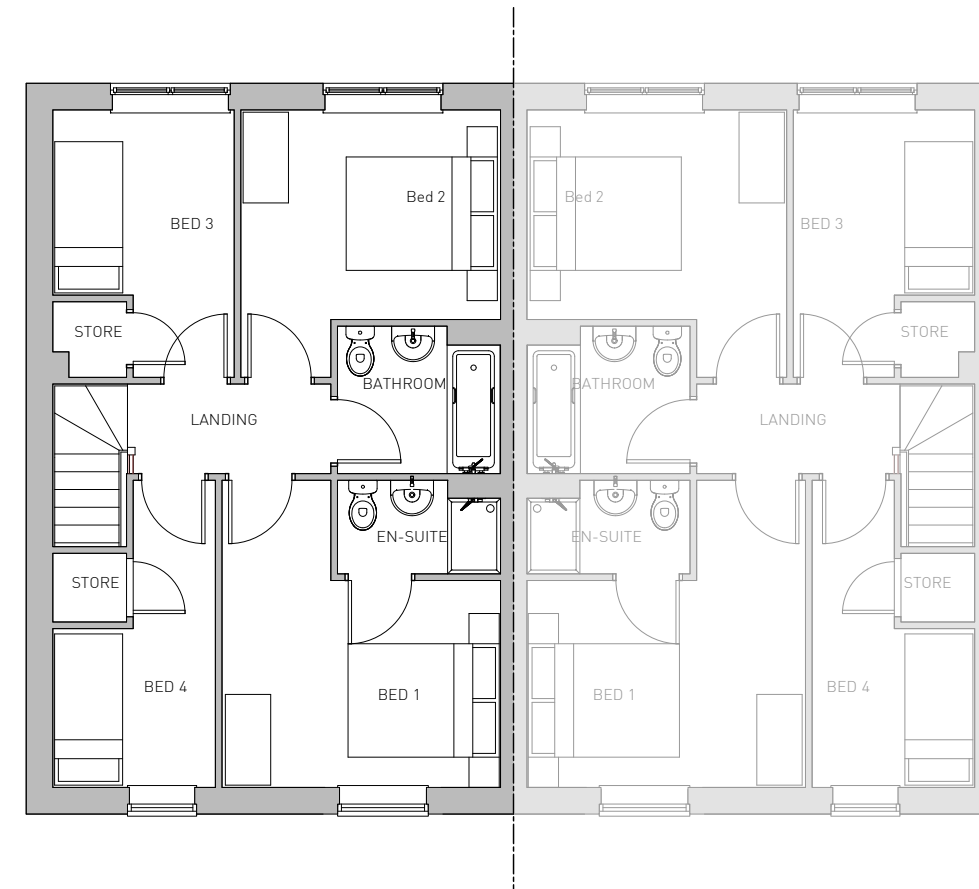


STOCKTON, SUMMERVILLE FARM - SPIERS - 1153 SQFT. / 107.1 SQM.





GROUND FLOOR



FIRST FLOOR



STOCKTON, SUMMERVILLE FARM - SPIERS - 1153 SQFT. / 107.1 SQM.



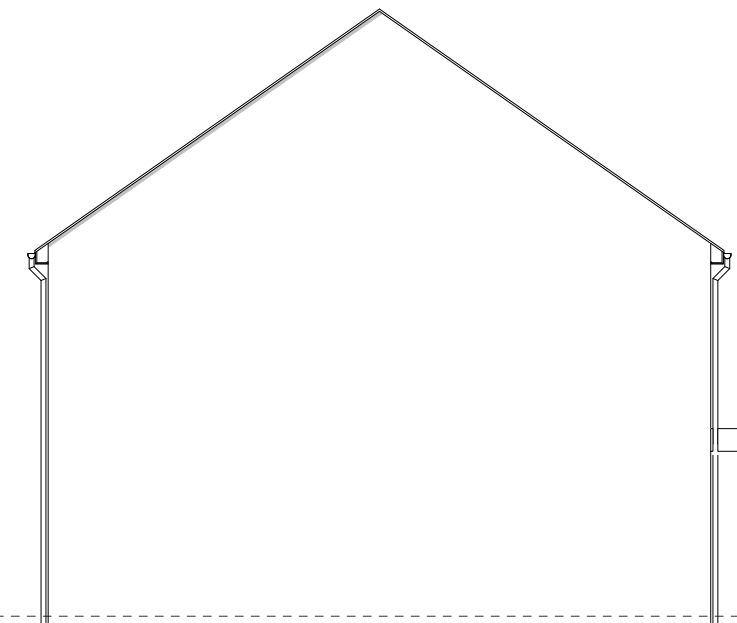
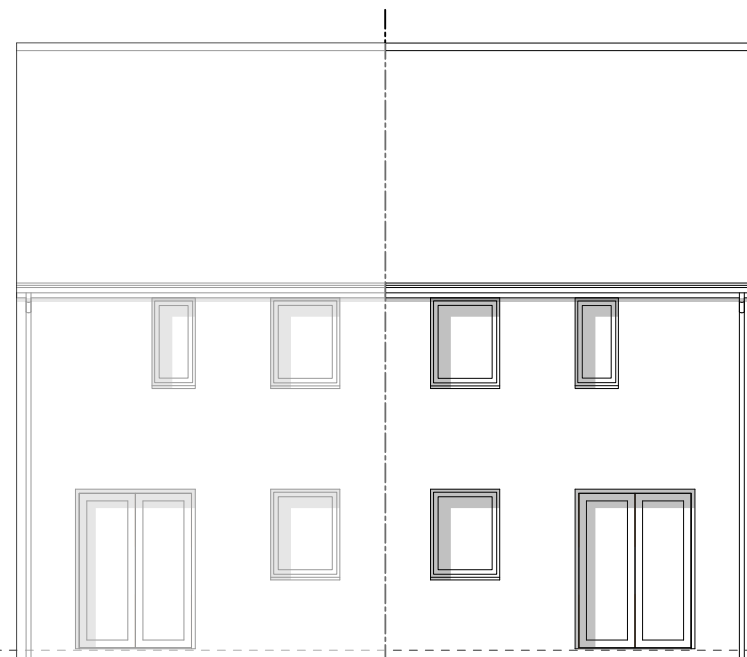
PLOTS: 32(H), 33, 45, 152, 175, 187(H), 188, 199(H), 200, 204(H), 215(H), 216, 217(H), 225, 227(H), 256(H), 285, 290(H), 291, 296(H), 297, 318(H), 319, 323(H), 324, 359(H), 364, 365(H), 368, 370(H), 374(H), 375



FRONT ELEVATION

SIDE ELEVATION

PLEASE REFER TO MATERIALS PLAN FOR DETAILED SPECIFICATION



REAR ELEVATION

SIDE ELEVATION



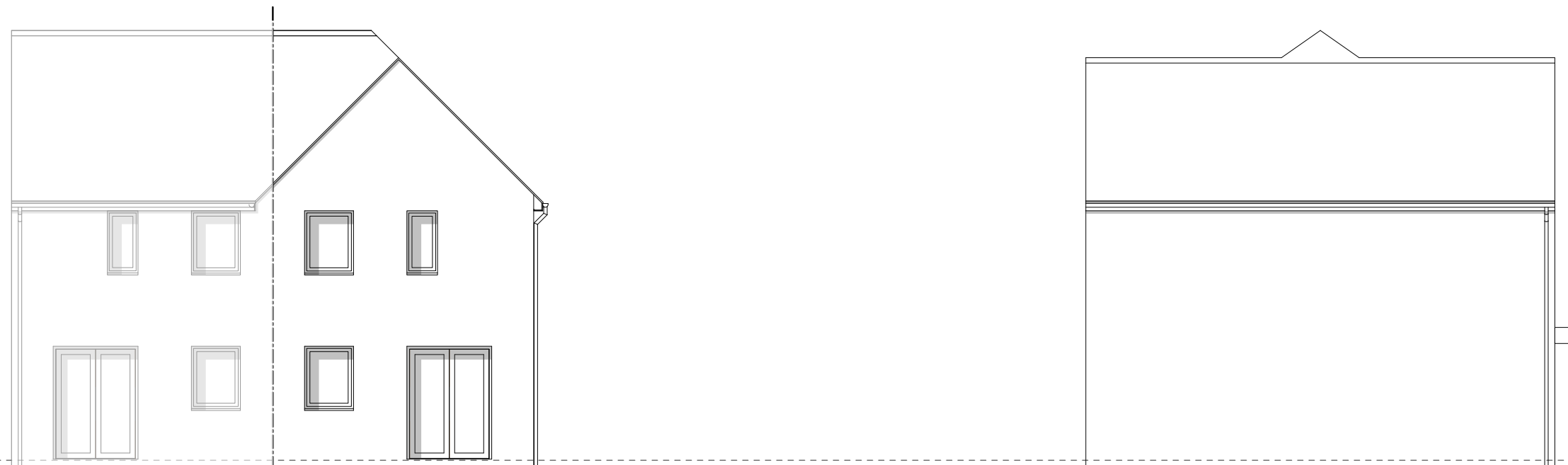
STOCKTON, SUMMERVILLE FARM - ATKINS V1 - 763 SQFT. / 70.9 SQM.



PLOTS: 90, 317, 283(H), 320(H)



PLEASE REFER TO MATERIALS PLAN FOR DETAILED SPECIFICATION



0 1 2 5m

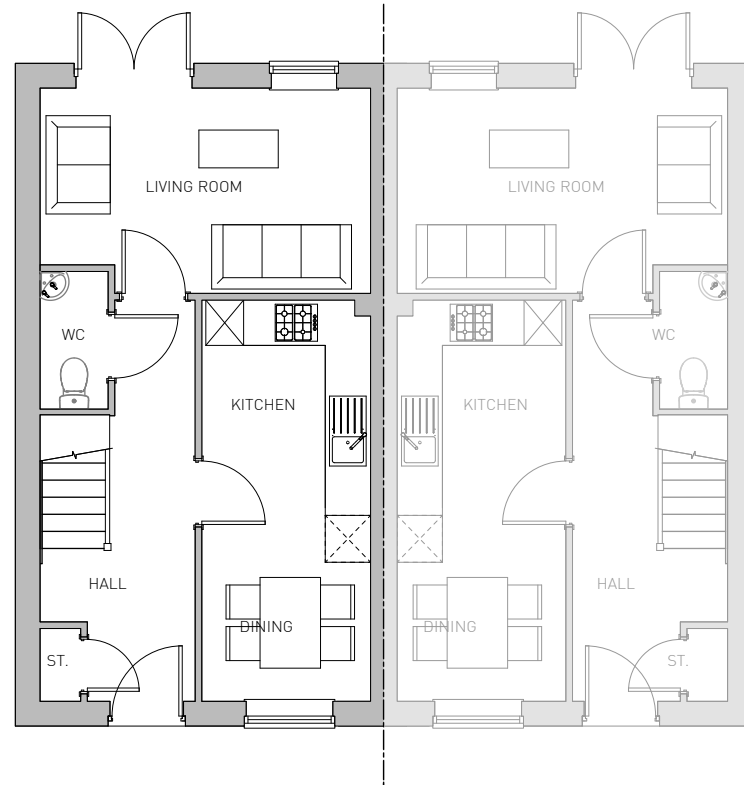
STOCKTON, SUMMERVILLE FARM - ATKINS V2 - 763 SQFT. / 70.9 SQM.



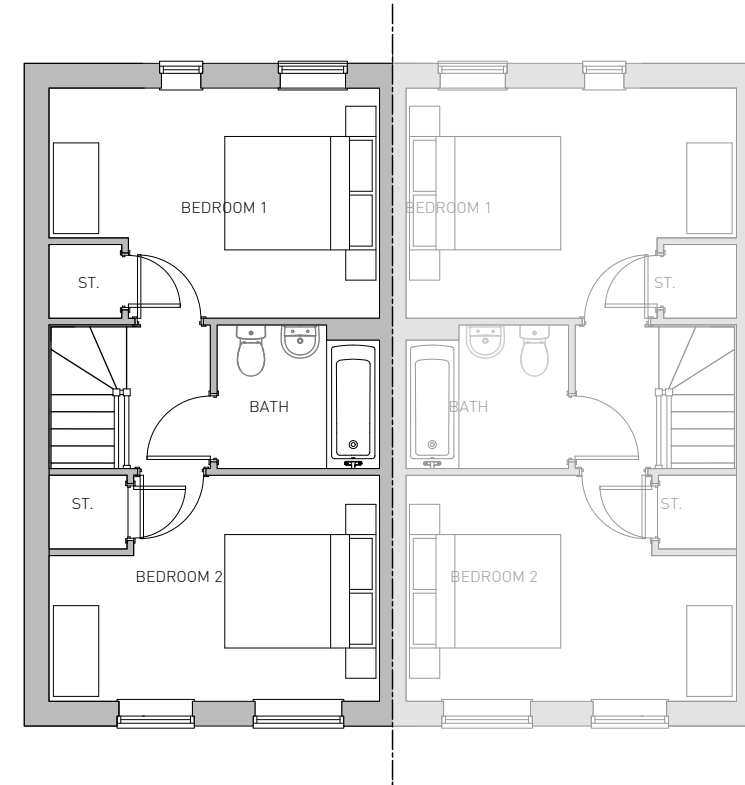
PLANNING | DESIGN | ENVIRONMENT | ECONOMICS

| www.pegasusgroup.co.uk | TEAM/DRAWN BY: KUN | APPROVED BY: MFA | DATE: 01/02/22 | SCALE: 1:100 @ A3 | DRWG: P21-0029_09 SHEET NO: ATK REV: D | CLIENT: VISTRY PARTNERSHIP (NORTH EAST) |

Copyright Pegasus Planning Group Ltd. Crown copyright. All rights reserved. Ordnance Survey Copyright Licence number 100042093. Premap Licence number 100020449. EmapSite Licence number 0100031673. Standard OS licence rights conditions apply. Pegasus accepts no liability for any use of this document other than for its original purpose, or by the original client, or following Pegasus' express agreement to such use. T 01285 641717 www.pegasusgroup.co.uk



GROUND FLOOR



FIRST FLOOR



LAND AT POUND FARM, LYNEHAM - ATKINS V1/2 - 754 SQFT. / 70 SQM.

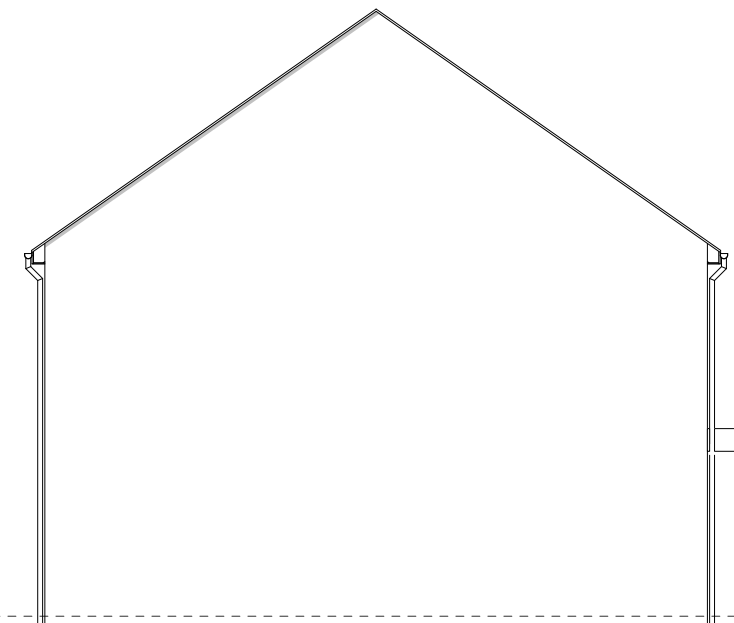
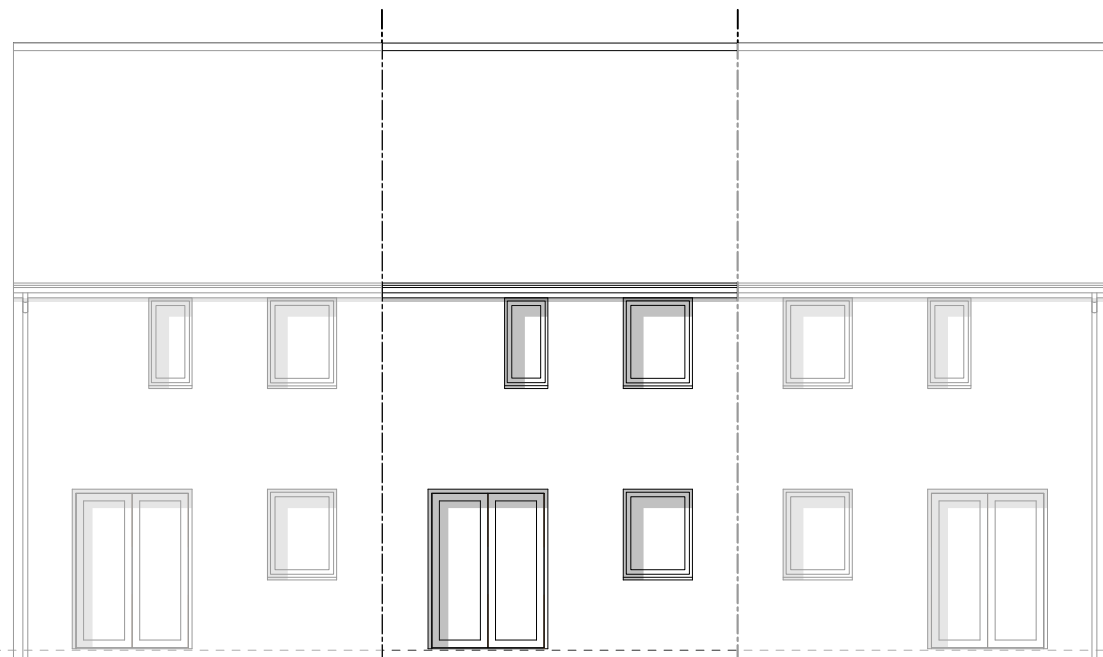
PLOTS: 34, 40, 46, 91, 92, 150(H), 153, 154(H), 157, 170, 173, 176(H), 186(H), 189, 190(H), 201, 206, 207, 219(H), 226, 242(H), 243, 245, 246(H), 247, 250(H), 255, 262(H), 269(H), 270, 284, 293, 322, 325(H), 345, 348, 355(H), 358(H), 361(H), 369, 373, 376(H)



FRONT ELEVATION

SIDE ELEVATION

PLEASE REFER TO MATERIALS PLAN FOR DETAILED SPECIFICATION



REAR ELEVATION

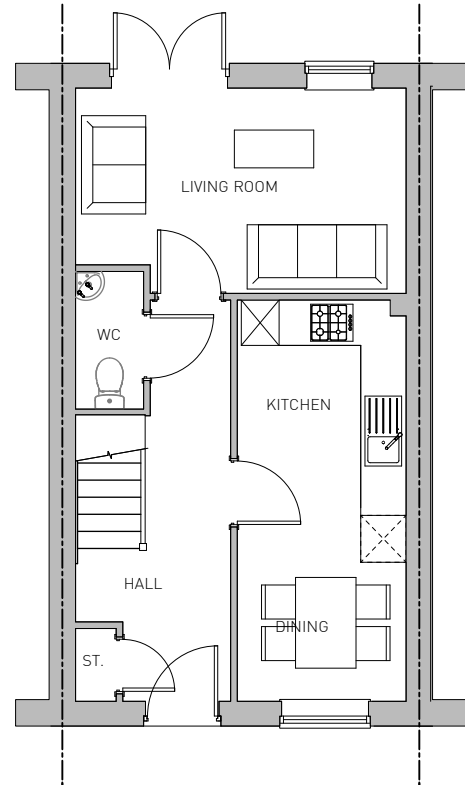
SIDE ELEVATION



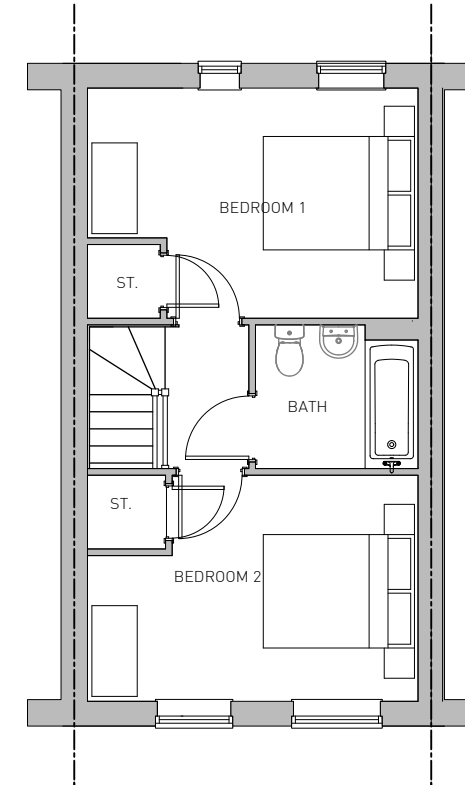
STOCKTON, SUMMERVILLE FARM - ATKINS V3 - 763 SQFT. / 70.9 SQM.



PLOTS: 34, 40, 46, 91, 92, 150(H), 153, 154(H), 157, 170, 173, 176(H), 186(H), 189, 190(H), 201, 206, 207, 219(H), 226, 242(H), 243, 245, 246(H), 247, 250(H), 255, 262(H), 269(H), 270, 284, 293, 322, 325(H), 345, 348, 355(H), 358(H), 361(H), 369, 373, 376(H)



GROUND FLOOR



FIRST FLOOR



STOCKTON, SUMMERVILLE FARM - ATKINS V3 - 763 SQFT. / 70.9 SQM.



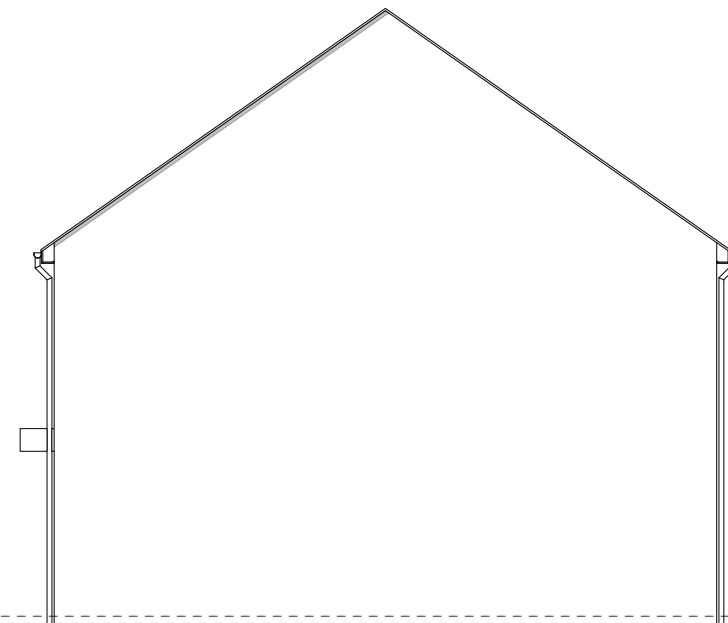
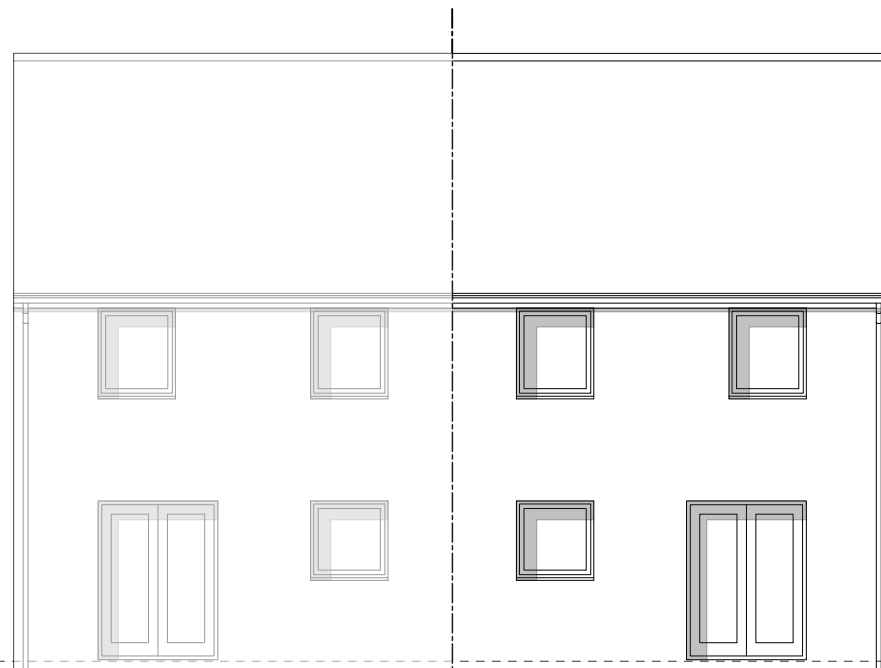
PLOTS: 39, 50(H) , 65, 67(H), 78(H), 84, 93(H), 94, 95(H), 103, 107, 110(H), 111, 120(H), 121



FRONT ELEVATION

SIDE ELEVATION

PLEASE REFER TO MATERIALS PLAN FOR DETAILED SPECIFICATION



REAR ELEVATION

SIDE ELEVATION



STOCKTON, SUMMERVILLE FARM - MAYFIELD V1 - 915 SQFT. / 85 SQM.



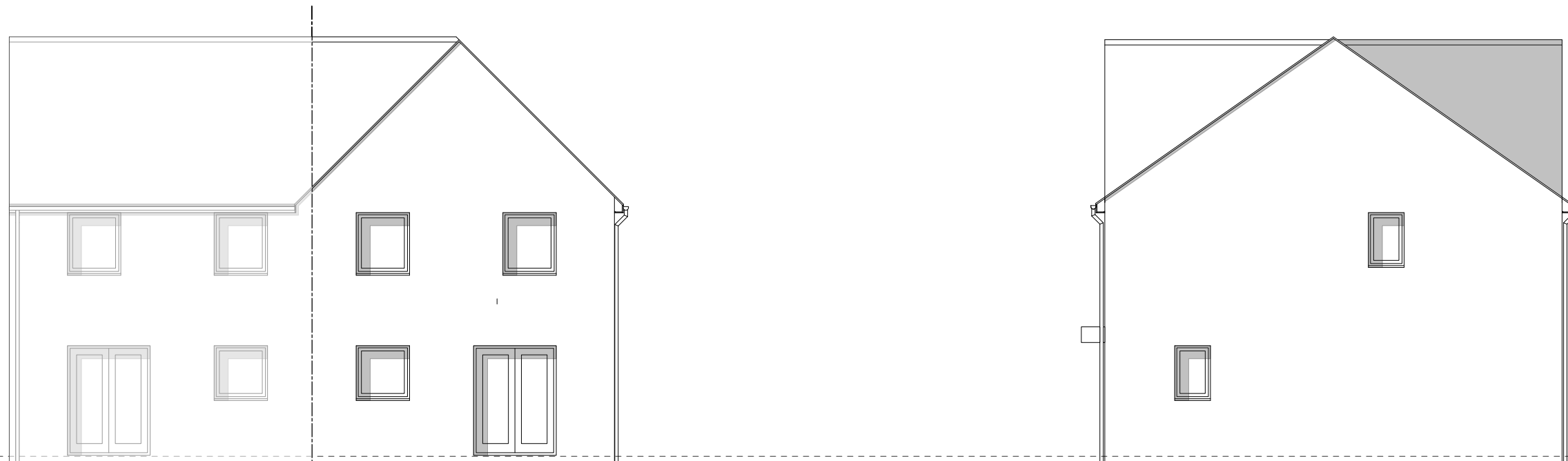
PLOTS: 41(H), 47(H), 48, 71, 73(H), 77, 86(H), 104(H), 108(H), 109, 112(H), 119, 122(H)



FRONT ELEVATION

SIDE ELEVATION

PLEASE REFER TO MATERIALS PLAN FOR DETAILED SPECIFICATION



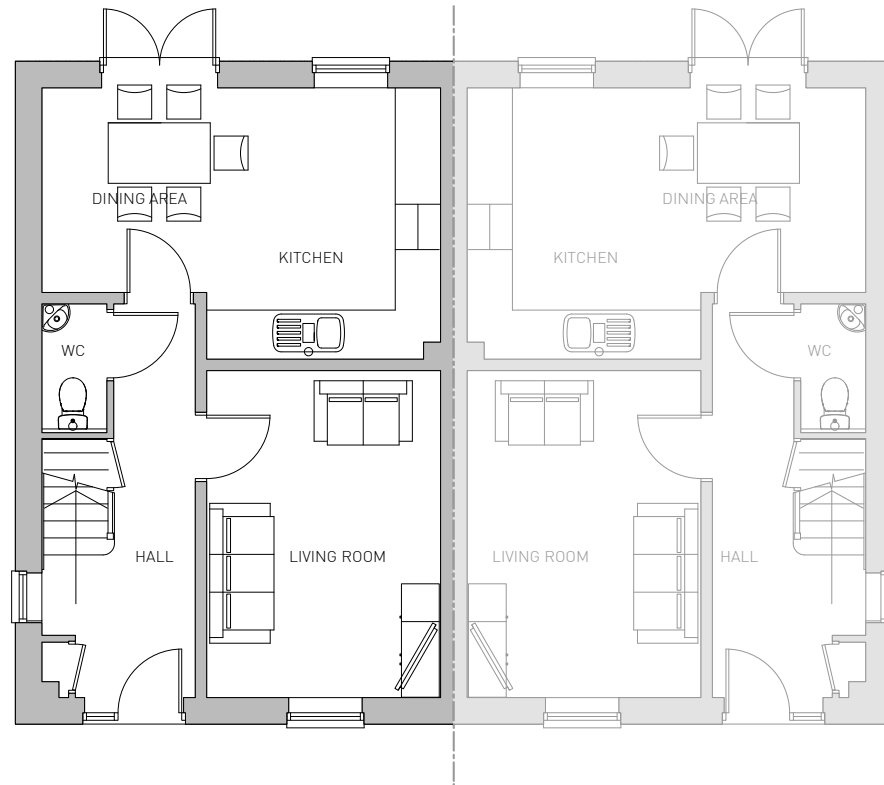
REAR ELEVATION

SIDE ELEVATION

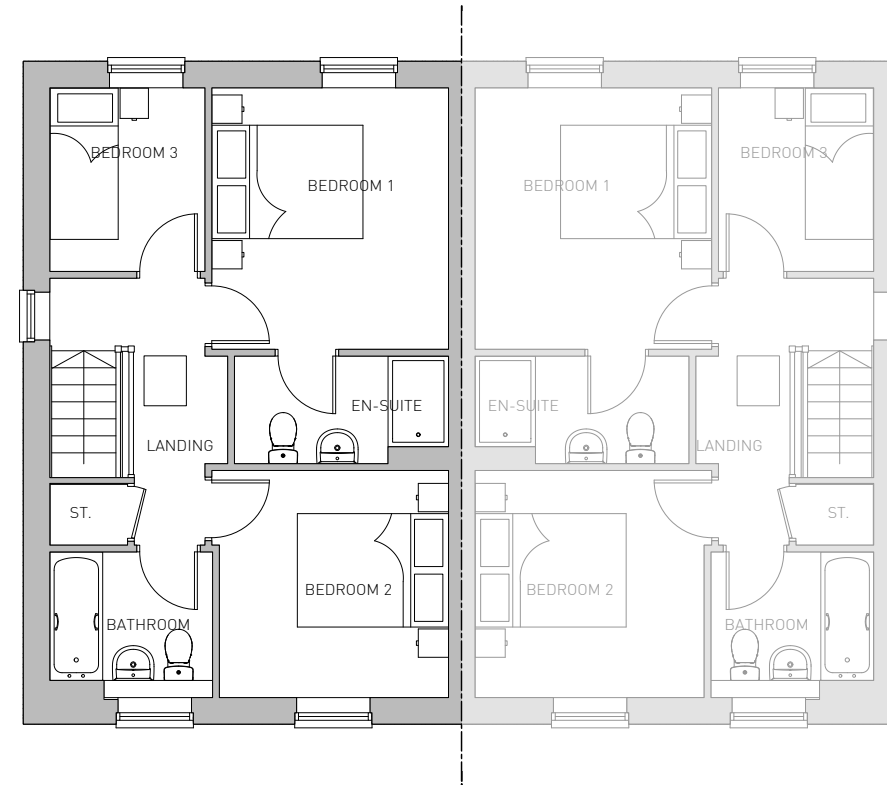


STOCKTON, SUMMERVILLE FARM - MAYFIELD V2 - 915 SQFT. / 85 SQM.





GROUND FLOOR



FIRST FLOOR



STOCKTON, SUMMERVILLE FARM - MAYFIELD V1/2 - 915 SQFT. / 85 SQM.

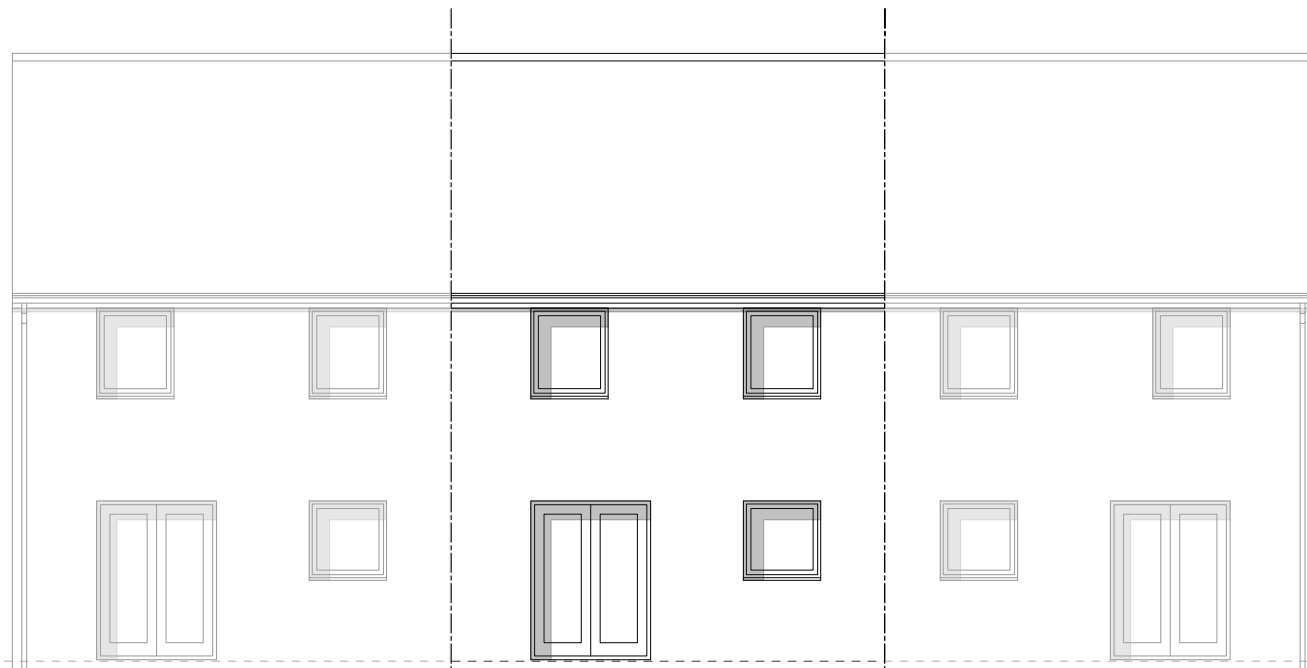
PLOTS: 49, 66, 72, 75, 85



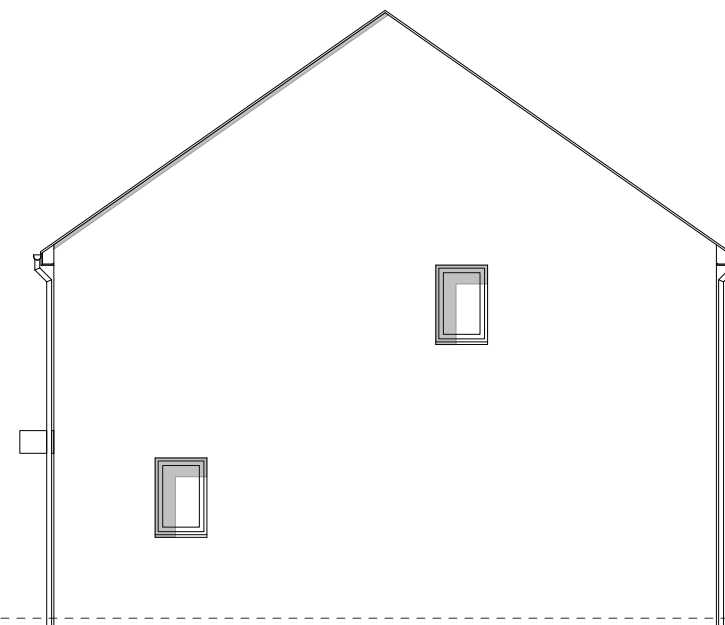
FRONT ELEVATION

SIDE ELEVATION

PLEASE REFER TO MATERIALS PLAN FOR DETAILED SPECIFICATION



REAR ELEVATION

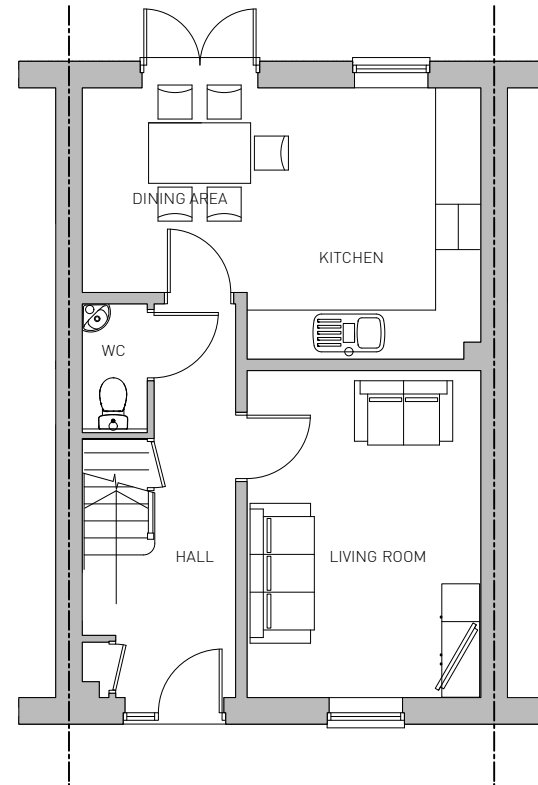


SIDE ELEVATION

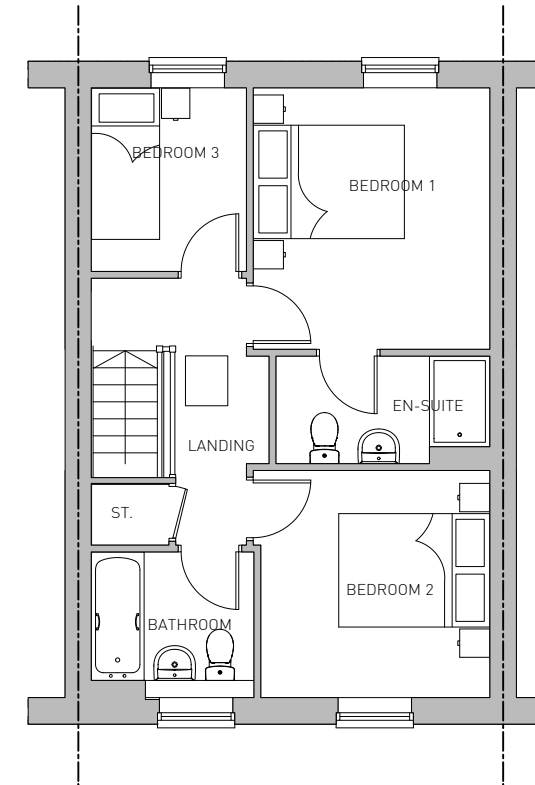


STOCKTON, SUMMERVILLE FARM - MAYFIELD V3 - 915 SQFT. / 85 SQM.





GROUND FLOOR



FIRST FLOOR



STOCKTON, SUMMERVILLE FARM - MAYFIELD V3 - 915 SQFT. / 85 SQM.

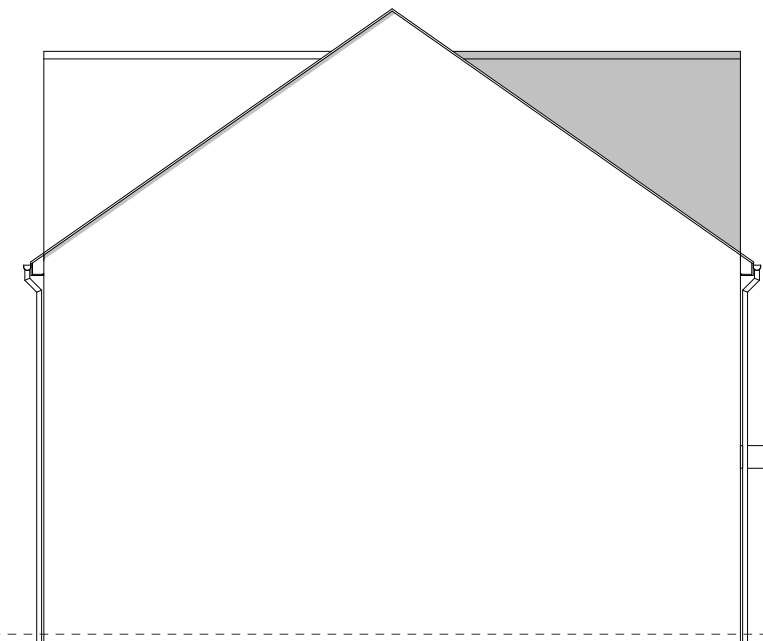
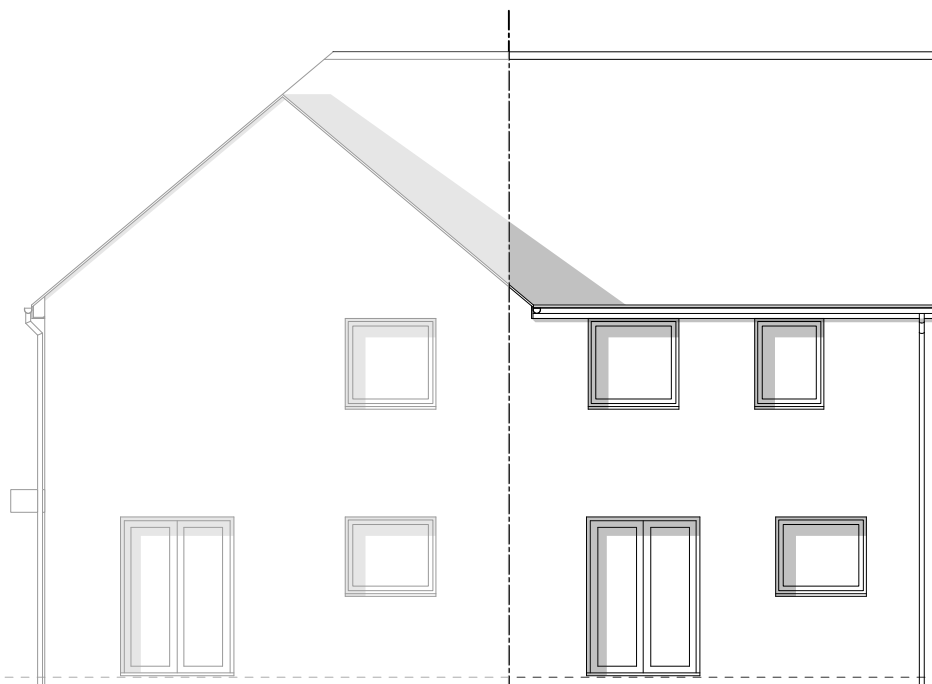
PLOTS: 4, 7, 17, 20(H), 38(H), 61(H), 82, 102(H), 106(H), 129(H), 134, 195(H), 211(H), 212, 222, 234(H), 240, 265(H), 274, 286(H), 289, 304, 352



FRONT ELEVATION

SIDE ELEVATION

PLEASE REFER TO MATERIALS PLAN FOR DETAILED SPECIFICATION



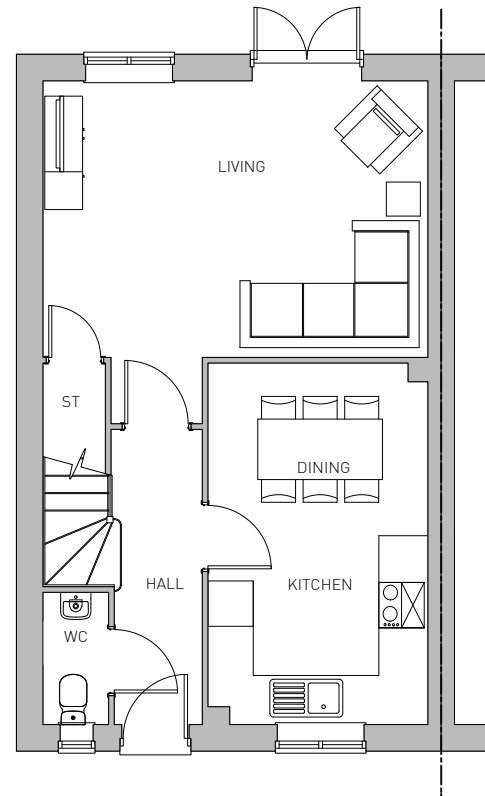
REAR ELEVATION

SIDE ELEVATION

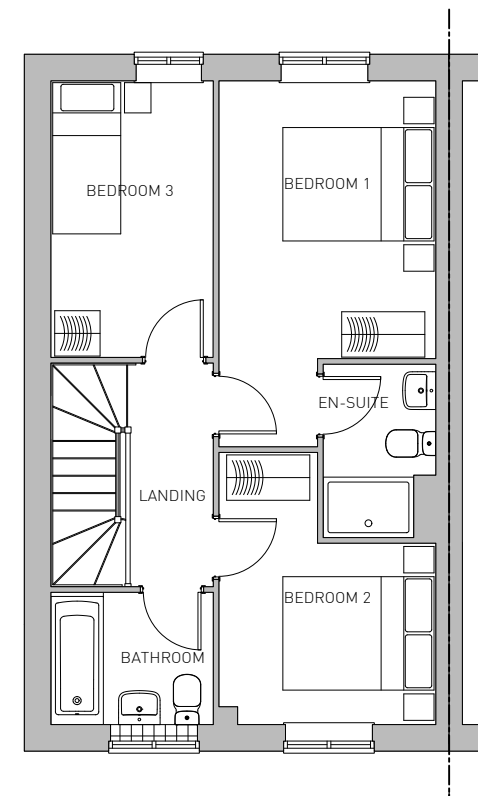


STOCKTON, SUMMERVILLE FARM - ELMSLIE V1 - 933 SQFT. / 86.7 SQM.





GROUND FLOOR



FIRST FLOOR



STOCKTON, SUMMERVILLE FARM - ELMSLIE V1 - 933 SQFT. / 86.7 SQM.

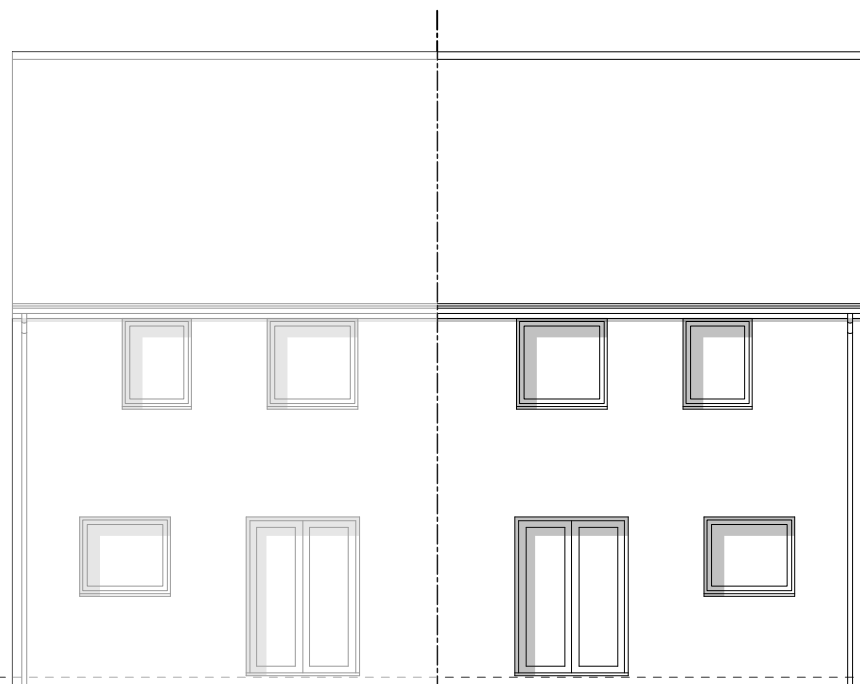
PLOTS: 28(H), 29, 44(H), 51, 53(H), 54, 56(H), 57, 62, 64(H), 68, 79, 81(H), 96, 97(H), 98, 115(H), 116, 125(H), 230(H), 237, 257, 258(H), 272, 273(H), 279, 280(H), 281, 282(H), 327, 328(H), 350, 351(H), 366, 367(H)



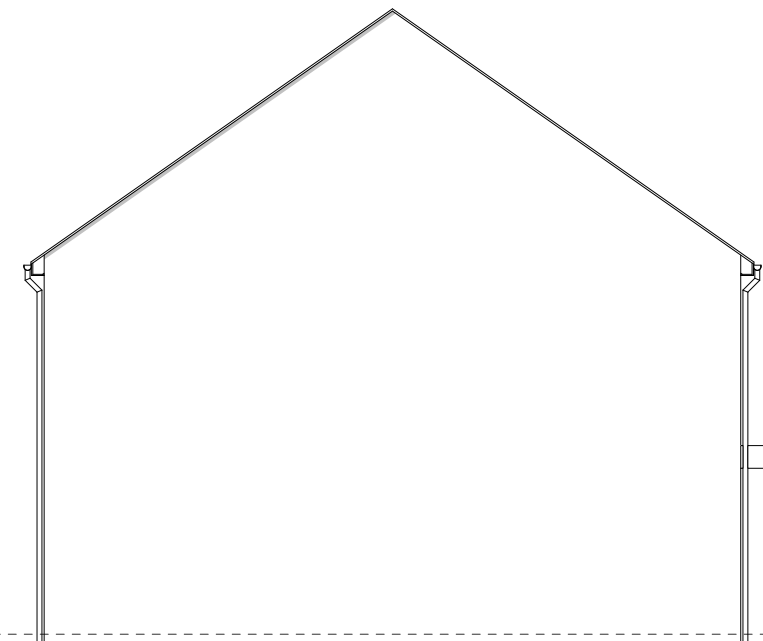
FRONT ELEVATION

SIDE ELEVATION

PLEASE REFER TO MATERIALS PLAN FOR DETAILED SPECIFICATION



REAR ELEVATION



SIDE ELEVATION



STOCKTON, SUMMERVILLE FARM - ELMSLIE V2 - 933 SQFT. / 86.7 SQM.



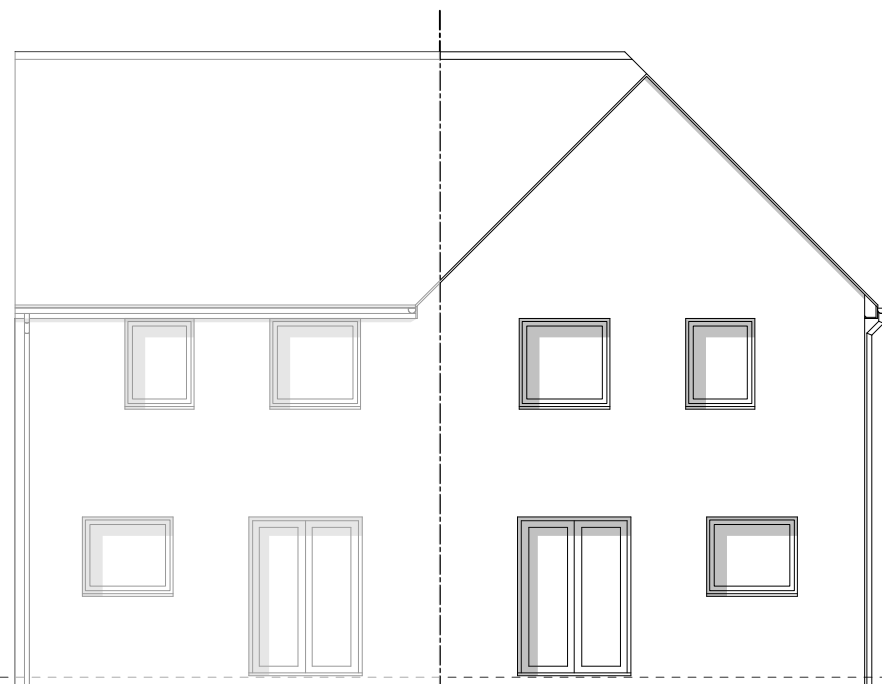
PLOTS: 5(H), 19, 42, 70(H), 74, 76(H), 83(H), 87, 89(H), 105, 113, 241(H), 244, 245(H), 248, 254, 268, 271(H), 298, 321, 326(H)



FRONT ELEVATION

SIDE ELEVATION

PLEASE REFER TO MATERIALS PLAN FOR DETAILED SPECIFICATION



REAR ELEVATION

SIDE ELEVATION



STOCKTON, SUMMERVILLE FARM - ELMSLIE V3 - 933 SQFT. / 86.7 SQM.



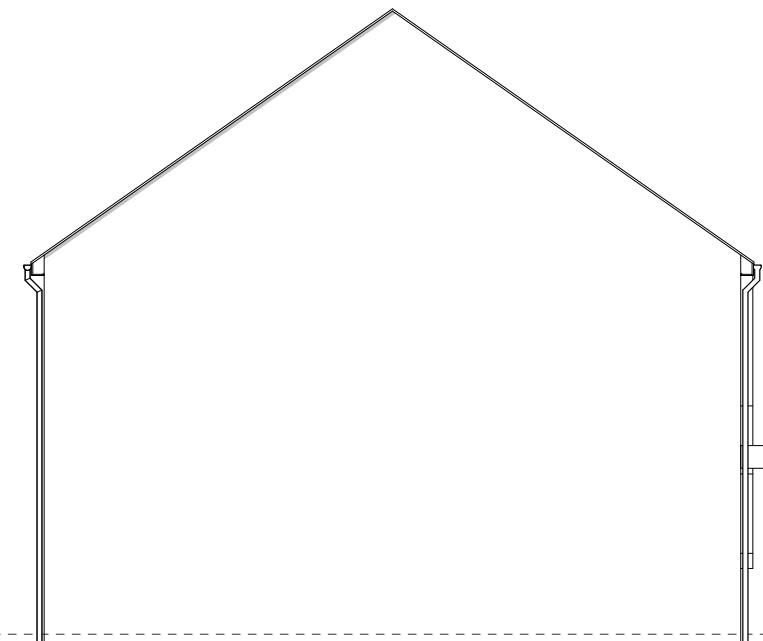
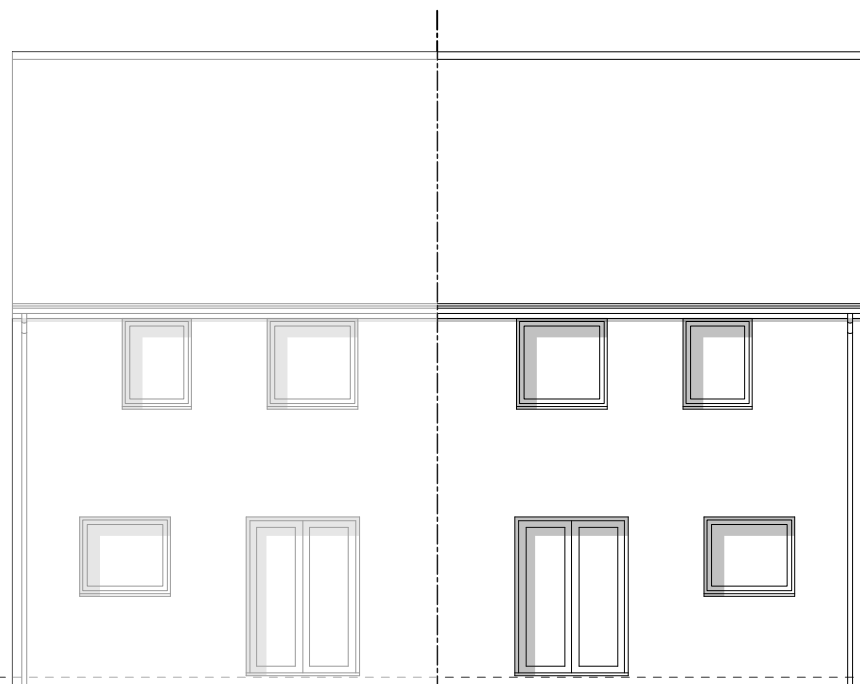
PLOTS: 259, 260(H), 329, 330(H), 379(H)



FRONT ELEVATION

SIDE ELEVATION

PLEASE REFER TO MATERIALS PLAN FOR DETAILED SPECIFICATION



REAR ELEVATION

SIDE ELEVATION



STOCKTON, SUMMERVILLE FARM - ELMSLIE V4 - 933 SQFT. / 86.7 SQM.



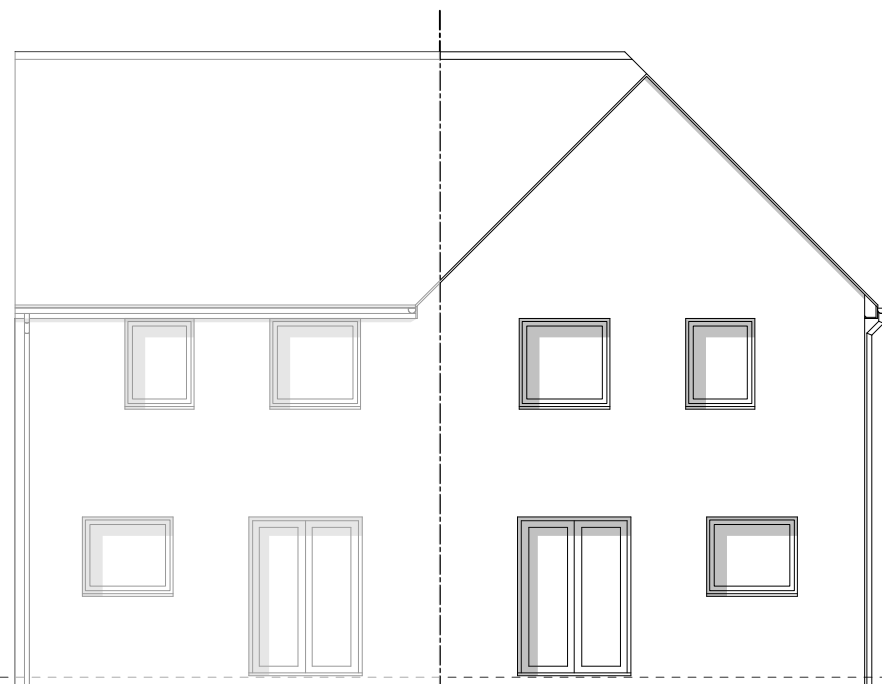
PLOTS: 239(H), 288(H), 295(H), 305(H), 378



FRONT ELEVATION

SIDE ELEVATION

PLEASE REFER TO MATERIALS PLAN FOR DETAILED SPECIFICATION



REAR ELEVATION

SIDE ELEVATION



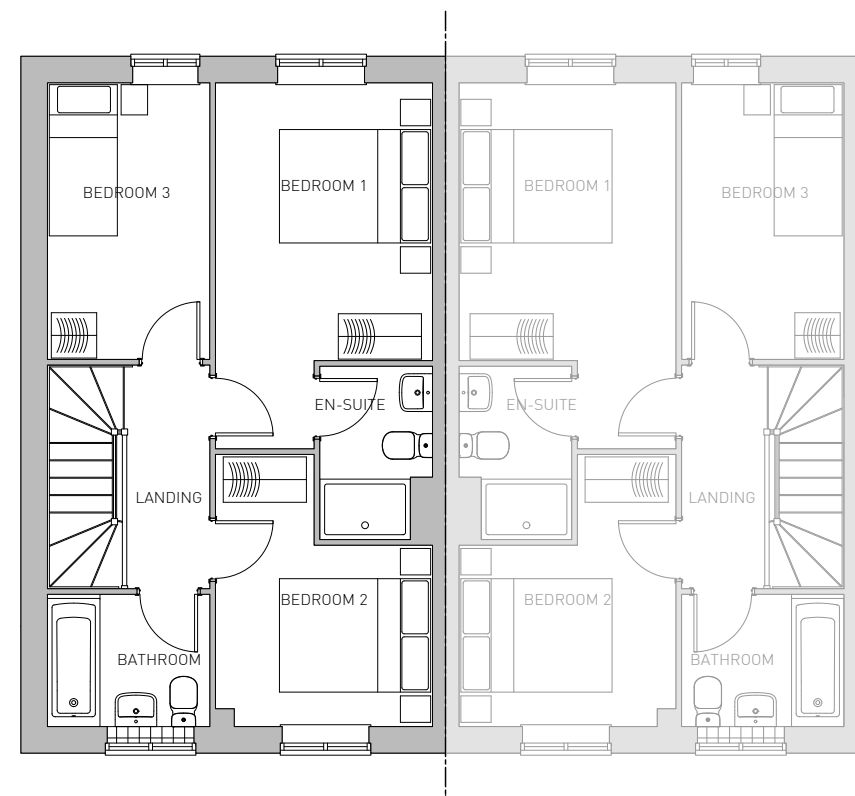
STOCKTON, SUMMERVILLE FARM - ELMSLIE V5 - 933 SQFT. / 86.7 SQM.



PLOTS: 5(H), 19, 28(H), 29, 38(H), 42, 44(H), 51, 53(H), 54, 56(H), 57, 61(H), 62, 64(H), 68, 70(H), 74, 76(H), 79, 81(H), 82, 83(H), 87, 89(H), 96, 97(H), 98, 102(H), 106, 105, 113, 115(H), 116, 125(H), 230(H), 237, 239(H), 241(H), 244, 245(H), 248, 254, 257, 258(H), 259, 260(H), 268, 271(H), 272, 273(H), 279, 280(H), 281, 282(H), 288(H), 295(H), 298, 305(H), 321, 326(H), 327, 328, 329, 330(H), 350, 351(H), 366, 367(H), 378



GROUND FLOOR



FIRST FLOOR



STOCKTON, SUMMERVILLE FARM - ELMSLIE V2/3/4/5- 933 SQFT. / 86.7 SQM.



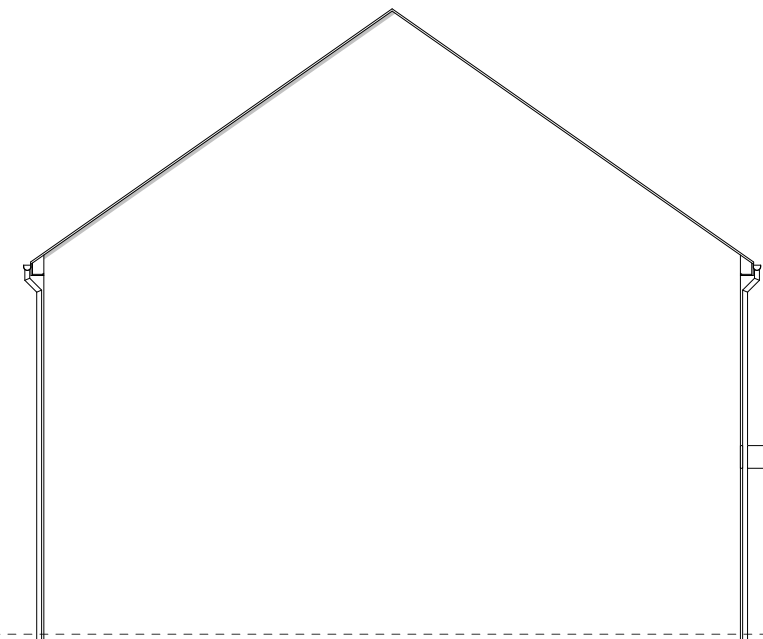
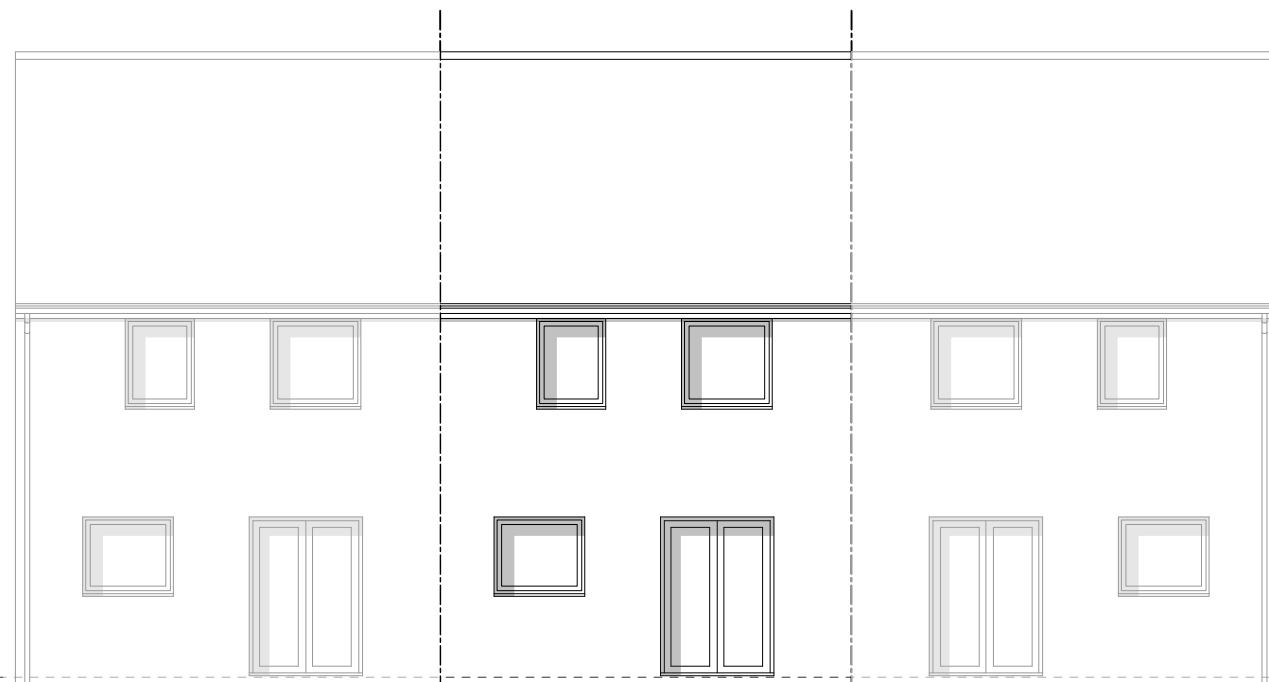
PLOTS: 43, 52, 55, 58, 63(H), 69(H), 80(H), 88, 99(H), 114(H), 117(H), 124(H), 229(H), 238(H)



FRONT ELEVATION

SIDE ELEVATION

PLEASE REFER TO MATERIALS PLAN FOR DETAILED SPECIFICATION



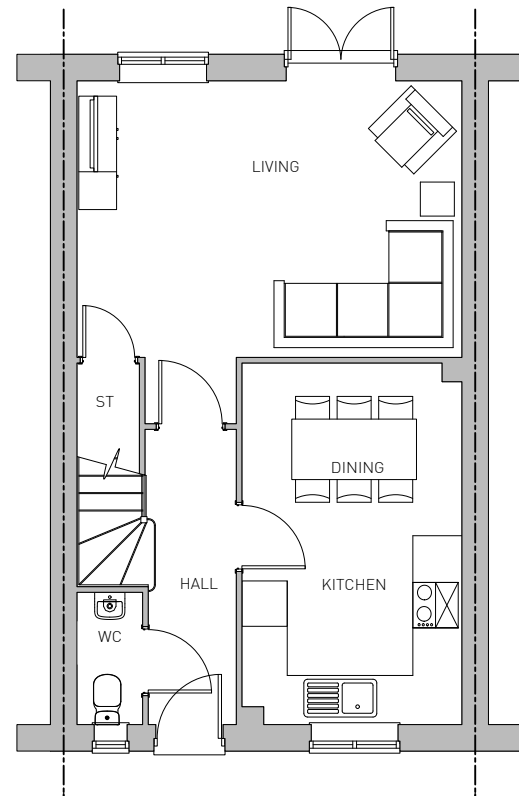
REAR ELEVATION

SIDE ELEVATION

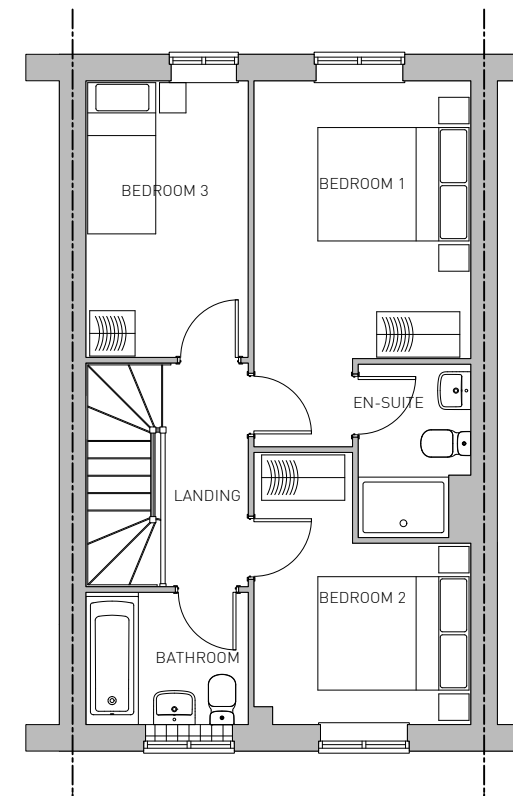


STOCKTON, SUMMERVILLE FARM - ELMSLIE V6 - 933 SQFT. / 86.7 SQM.





GROUND FLOOR



FIRST FLOOR



STOCKTON, SUMMERVILLE FARM - ELMSLIE V6 - 933 SQFT. / 86.7 SQM.

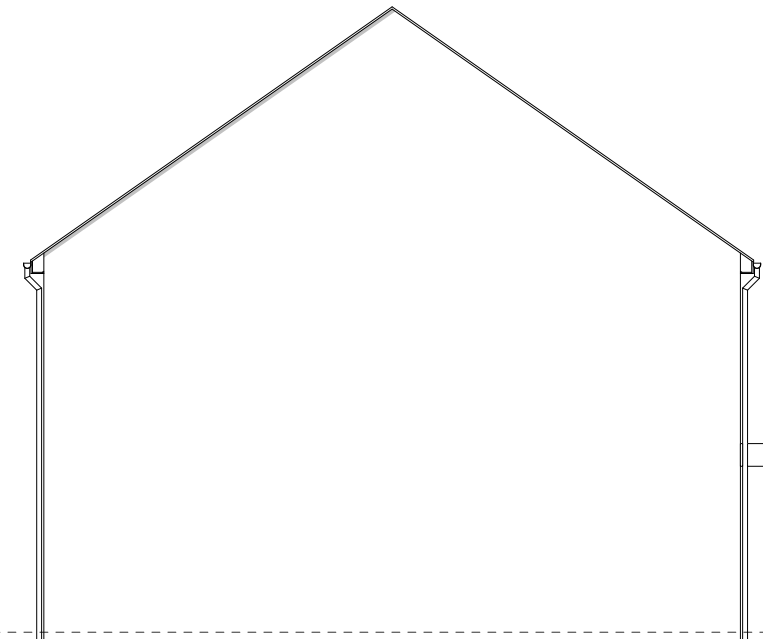
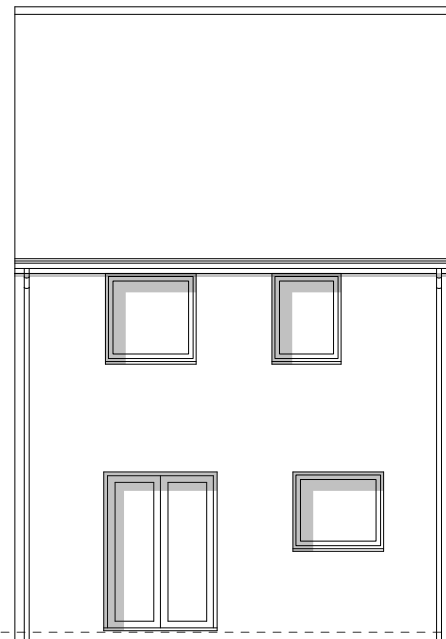
PLOTS: 2(H)



FRONT ELEVATION

SIDE ELEVATION

PLEASE REFER TO MATERIALS PLAN FOR DETAILED SPECIFICATION



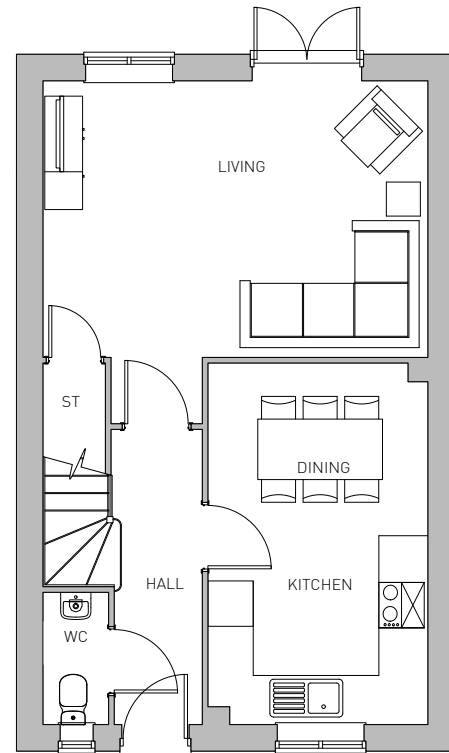
REAR ELEVATION

SIDE ELEVATION

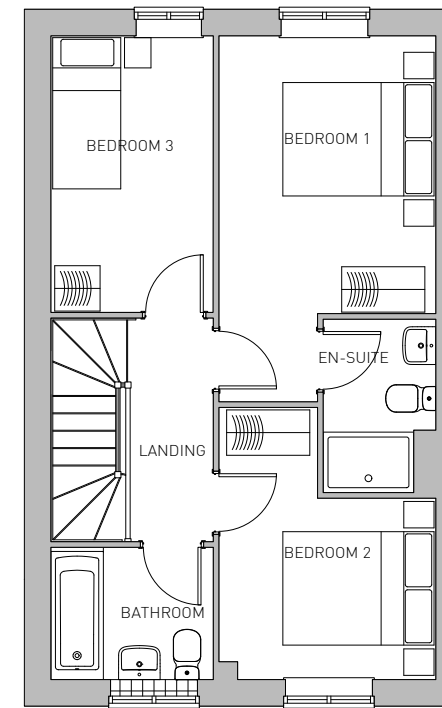


STOCKTON, SUMMERVILLE FARM - ELMSLIE V7 - 933 SQFT. / 86.7 SQM.





GROUND FLOOR



FIRST FLOOR



STOCKTON, SUMMERVILLE FARM - ELMSLIE V7 - 933 SQFT. / 86.7 SQM.

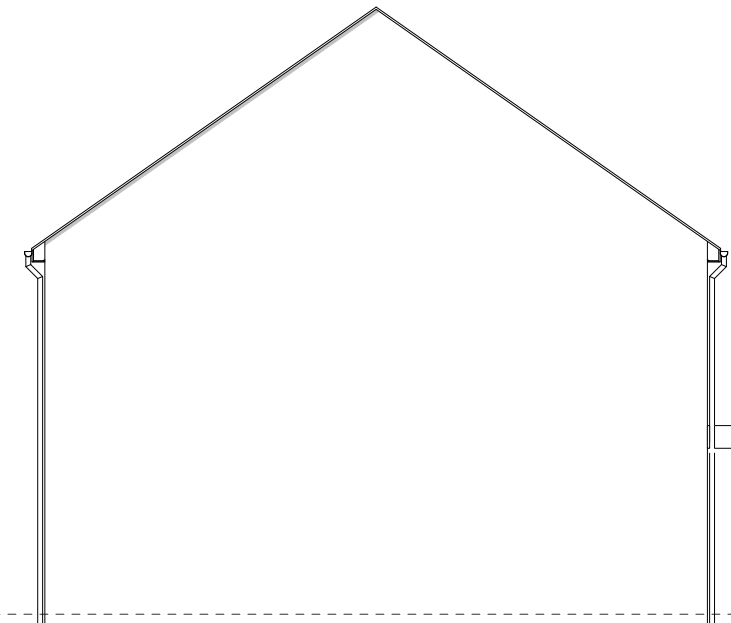
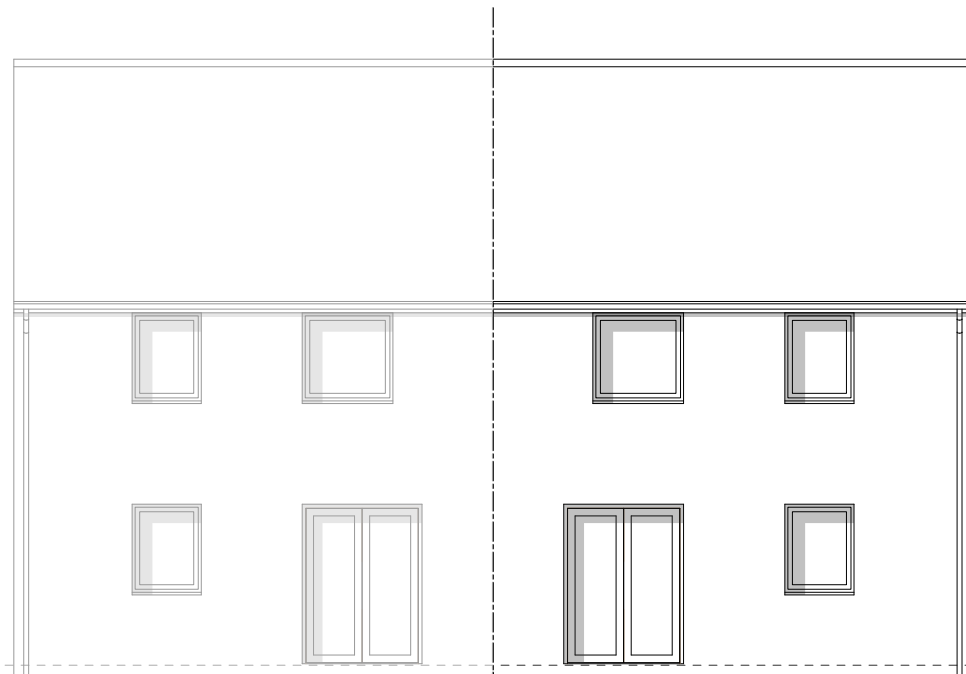
PLOTS: 13, 14(H), 25, 26(H), 35(H), 126, 127(H), 130, 131(H), 132, 133(H), 148, 151(H), 155(H), 159(H), 160, 171(H), 172, 174(H), 191(H), 202(H), 205, 208(H), 220(H), 231, 251, 252(H), 261, 292(H), 294, 299(H), 300, 331, 341(H), 344, 349(H), 356(H), 357, 360



FRONT ELEVATION

SIDE ELEVATION

PLEASE REFER TO MATERIALS PLAN FOR DETAILED SPECIFICATION



REAR ELEVATION

SIDE ELEVATION



STOCKTON, SUMMERVILLE FARM - ASHER V1 - 1007 SQFT. / 93.6 SQM.



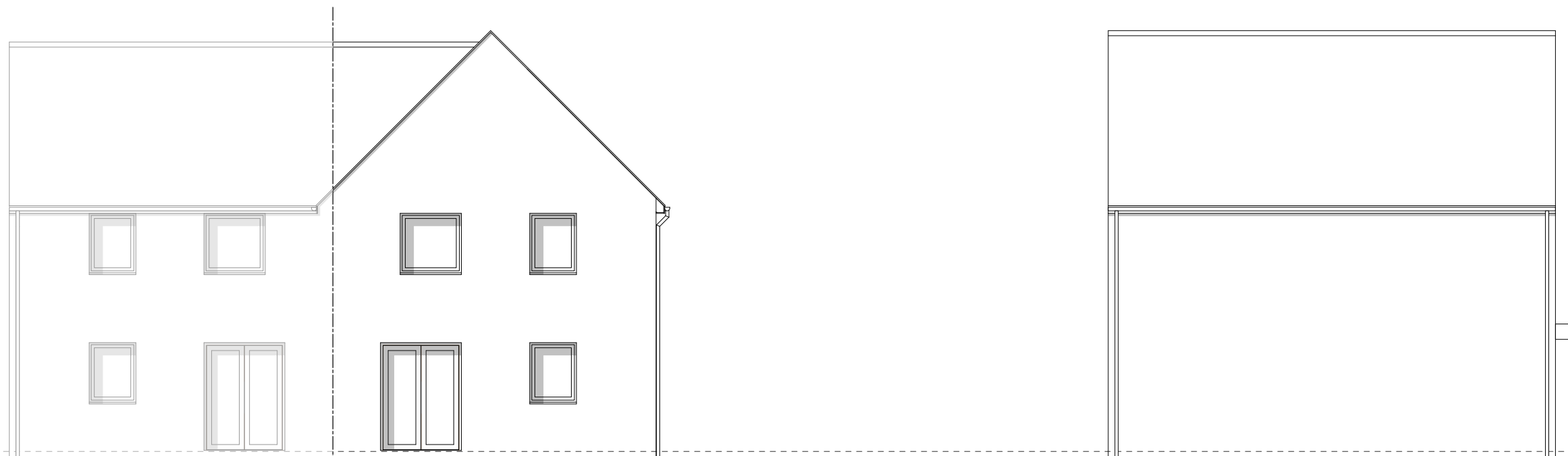
PLOTS: 30, 156, 163(H), 169, 177(H), 197, 249(H), 253, 263(H), 332(H), 340, 346(H), 347, 362(H), 372, 377(H)



FRONT ELEVATION

SIDE ELEVATION

PLEASE REFER TO MATERIALS PLAN FOR DETAILED SPECIFICATION



REAR ELEVATION

SIDE ELEVATION



STOCKTON, SUMMERVILLE FARM - ASHER V2 - 1007 SQFT. / 93.6 SQM.



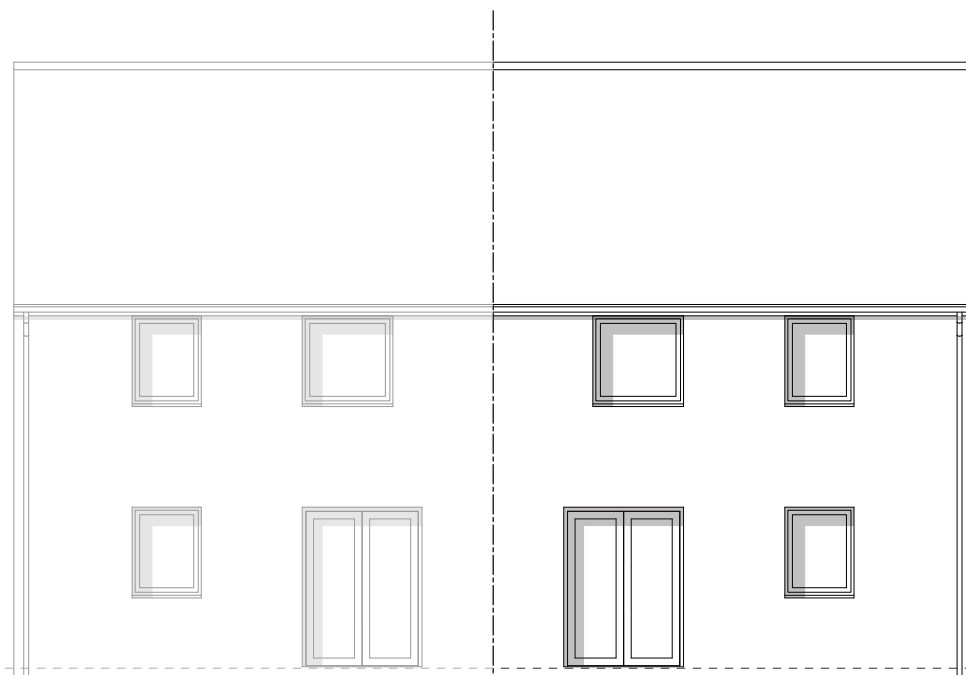
PLOTS: 164, 165(H), 179, 180(H), 185, 203, 214, 218, 232(H)



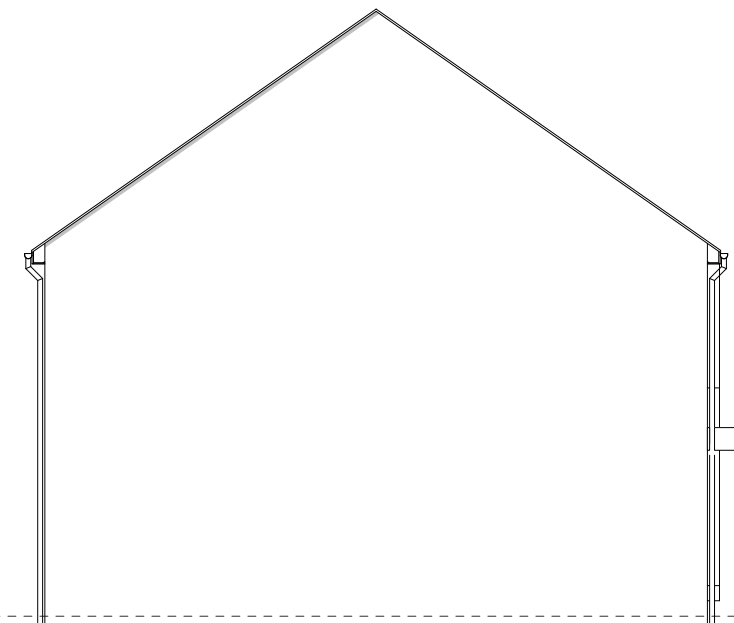
FRONT ELEVATION

SIDE ELEVATION

PLEASE REFER TO MATERIALS PLAN FOR DETAILED SPECIFICATION



REAR ELEVATION



SIDE ELEVATION



STOCKTON, SUMMERVILLE FARM - ASHER V3 - 1007 SQFT. / 93.6 SQM.



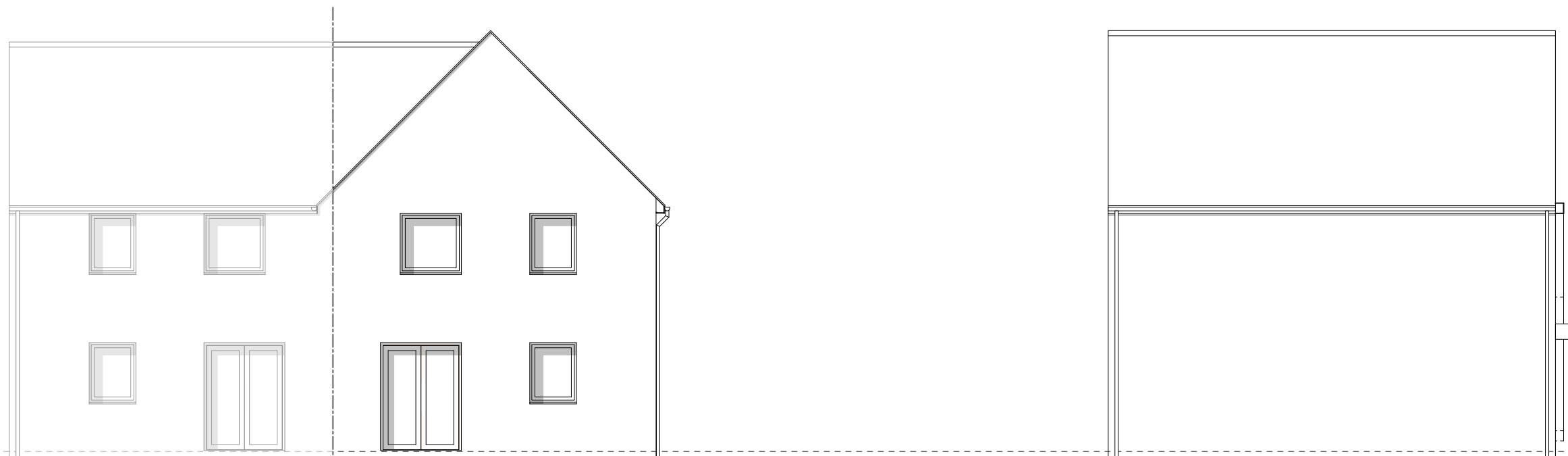
PLOTS: 354



FRONT ELEVATION

SIDE ELEVATION

PLEASE REFER TO MATERIALS PLAN FOR DETAILED SPECIFICATION



REAR ELEVATION

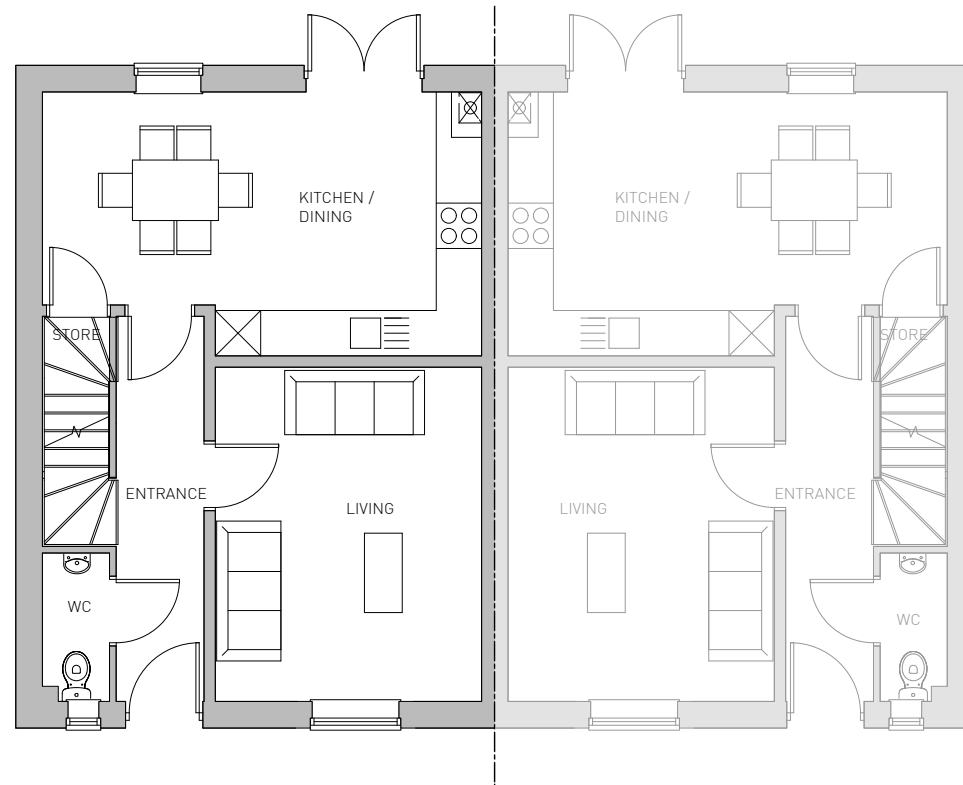
SIDE ELEVATION



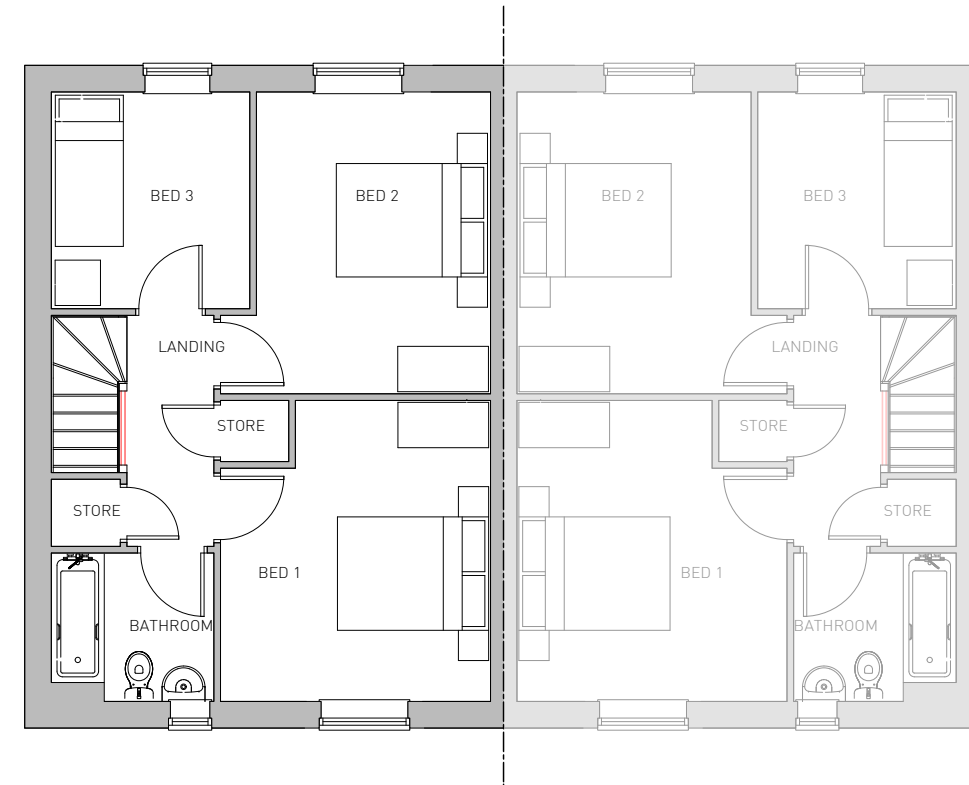
STOCKTON, SUMMERVILLE FARM - ASHER V4 - 1007 SQFT. / 93.6 SQM.



PLOTS: 13, 14(H), 25, 26(H), 30, 35(H), 126, 127(H), 130, 131(H), 132, 133(H), 148, 151(H), 155(H), 156, 159(H), 160, 163(H), 164, 165(H), 169, 171(H), 172, 174(H), 177(H), 179, 197, 180(H), 185, 191(H), 202(H), 203, 205, 208(H), 214, 218, 220(H), 231, 232(H), 249(H), 251, 252(H), 253, 261, 263(H), 292(H), 294, 299(H), 300, 331, 332(H), 340, 341(H), 344, 346(H), 349(H), 354, 356(H), 357, 360, 362(H), 372, 377(H)



GROUND FLOOR



FIRST FLOOR



STOCKTON, SUMMERVILLE FARM - ASHER V1/2/3/4 - 1007 SQFT. / 93.6 SQM.



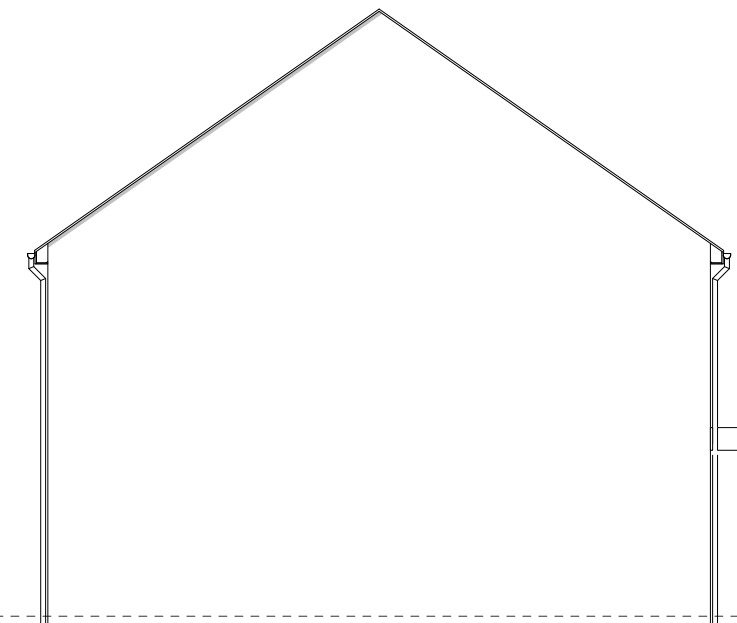
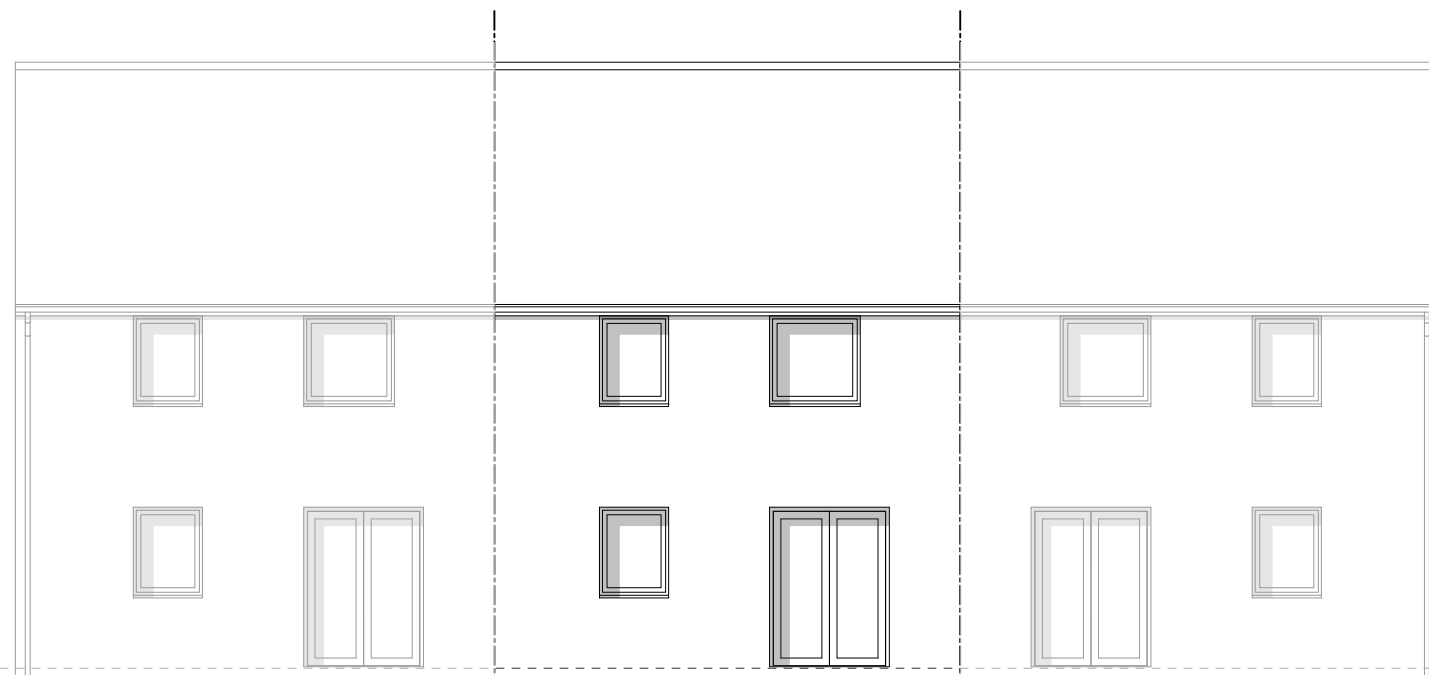
PLOTS: 31, 149, 158(H) , 161, 162(H), 198



FRONT ELEVATION

SIDE ELEVATION

PLEASE REFER TO MATERIALS PLAN FOR DETAILED SPECIFICATION



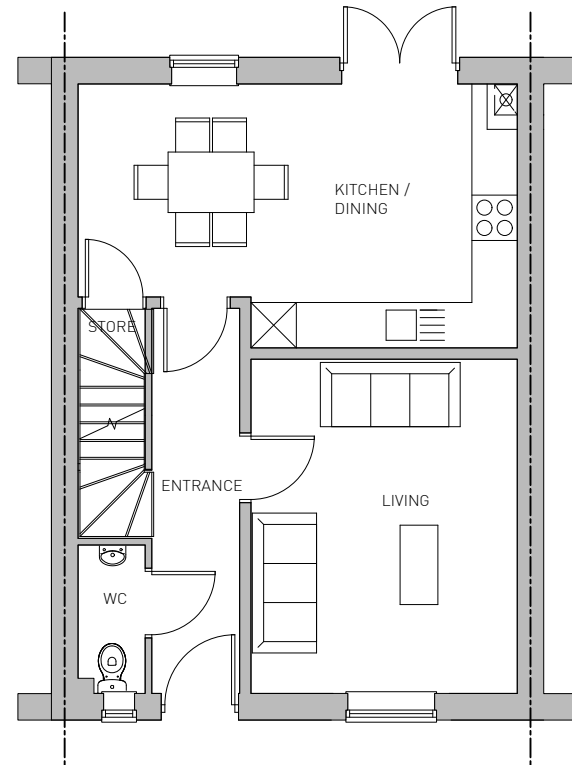
REAR ELEVATION

SIDE ELEVATION

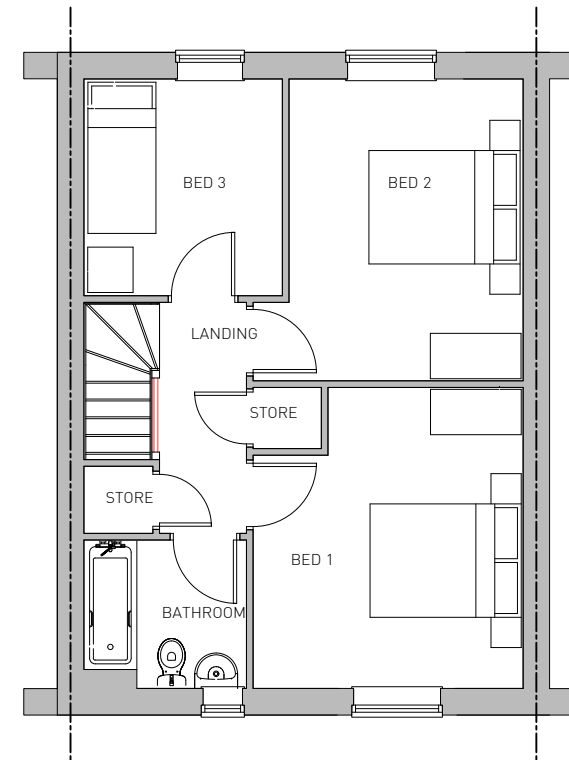


STOCKTON, SUMMERVILLE FARM - ASHER V5 - 1007 SQFT. / 93.6 SQM.





GROUND FLOOR



FIRST FLOOR



STOCKTON, SUMMERVILLE FARM - ASHER V5 - 1007 SQFT. / 93.6 SQM.

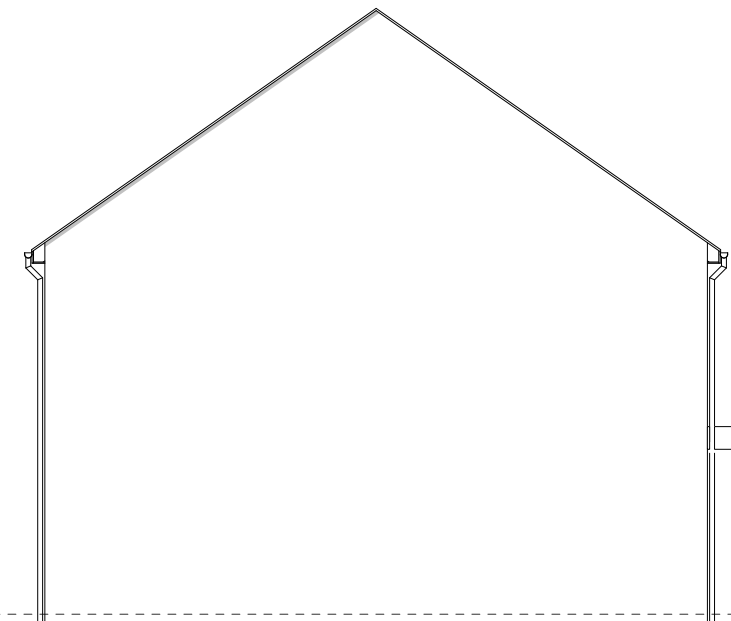
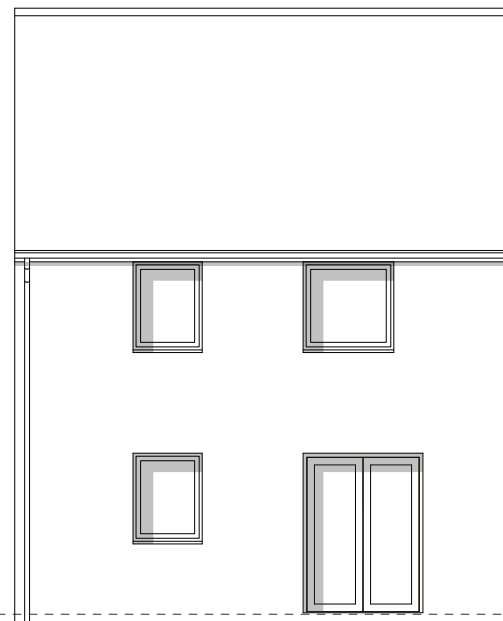
PLOTS: 3, 27, 138(H), 139(H), 315



FRONT ELEVATION

SIDE ELEVATION

PLEASE REFER TO MATERIALS PLAN FOR DETAILED SPECIFICATION



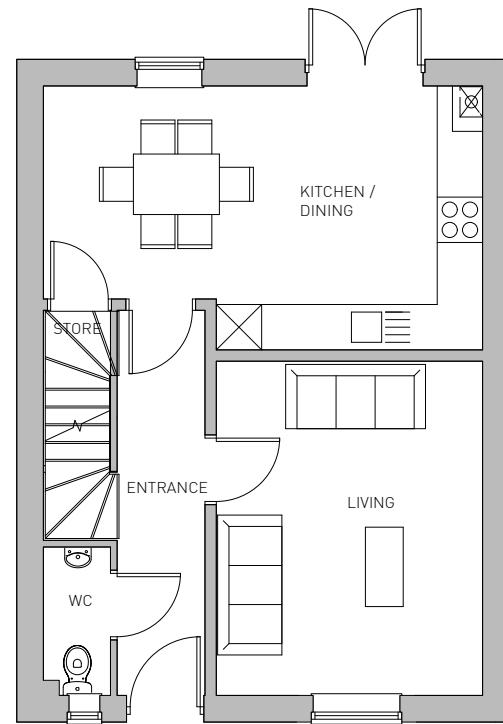
REAR ELEVATION

SIDE ELEVATION

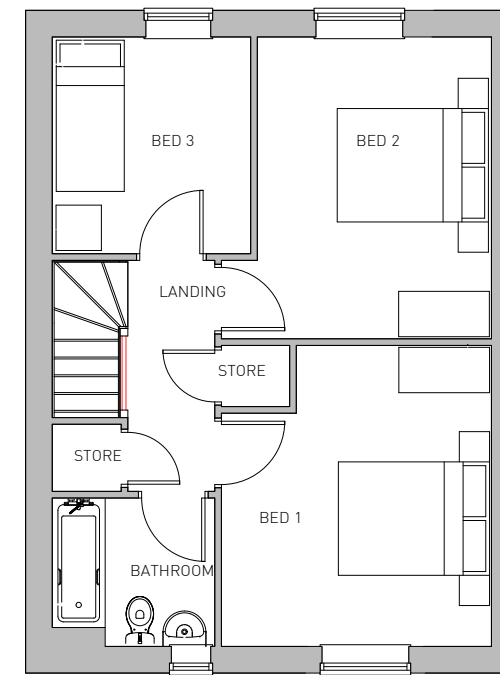


STOCKTON, SUMMERVILLE FARM - ASHER V6 - 1007 SQFT. / 93.6 SQM.





GROUND FLOOR



FIRST FLOOR



STOCKTON, SUMMERVILLE FARM - ASHER V6 - 1007 SQFT. / 93.6 SQM.



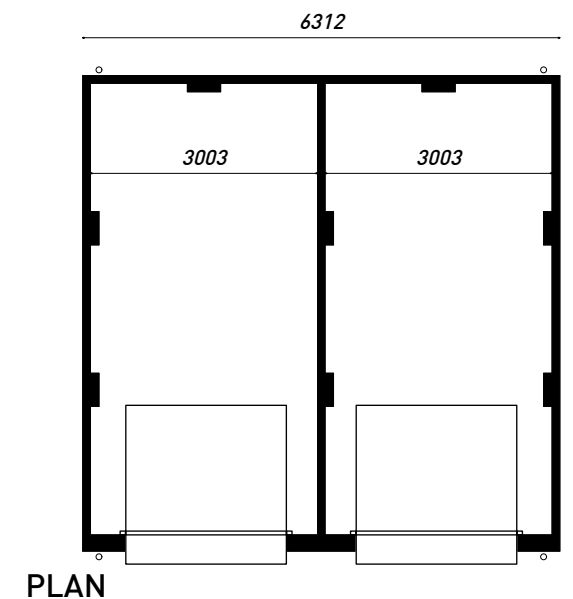


FRONT ELEVATION

SIDE ELEVATION

REAR ELEVATION

PLEASE REFER TO MATERIALS PLAN FOR DETAILED SPECIFICATION



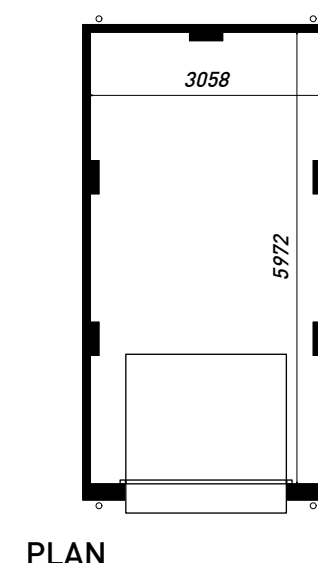
PLAN



FRONT ELEVATION

SIDE ELEVATION

REAR ELEVATION



PLAN



STOCKTON, SUMMERVILLE FARM - GARAGES





PEGASUS GROUP BRISTOL

First Floor, South Wing, Equinox North,
Great Park Road, Almondsbury, Bristol, BS32 4QL

E Bristol@pegasusgroup.co.uk

T 01454 625 945

PEGASUSGROUP.CO.UK



Pegasus Group is a trading name of Pegasus Planning Group Limited (07277000) registered in England and Wales
Registered Office: Pegasus House, Querns Business Centre, Whitworth Road, Cirencester, Gloucestershire, GL7 1RT



DESIGN



ENVIRONMENT



PLANNING



ECONOMICS



HERITAGE